



K-12 Enrollment History and Projections Fall 2013

Key Findings

1. The 2013-14 K-12 enrollment of 25,107 is the highest in more than 30 years and an increase of 96 students over 2012-13 enrollment.
2. We project slight enrollment increases over the next five years, leading to a projected enrollment of 26,254 for the 2018-19 school year.

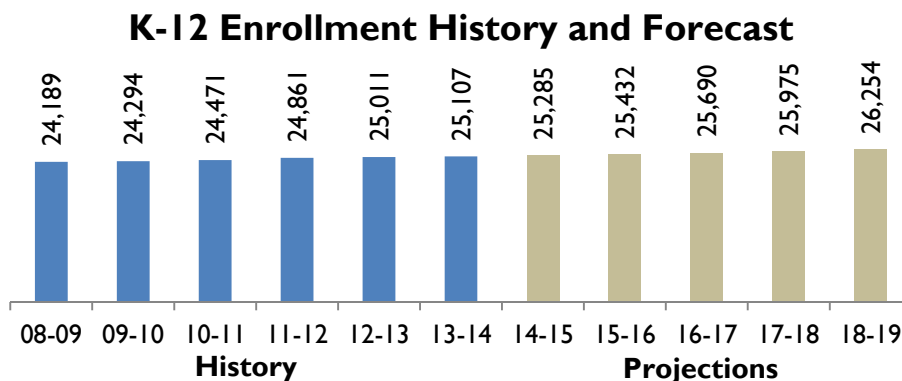
This report contains a brief enrollment history on the third Friday in September, the first official enrollment count of the year, for MMSD, as well as projected enrollments for the next five academic years. For a more detailed enrollment history, including disaggregation by student subgroups, visit <https://infosvcweb.madison.k12.wi.us/stats.htm>.

Projection Methodology

Enrollment projections in MMSD are based on historical enrollment trends and persistence rates from grade to grade. We cannot use 4K enrollment figures as part of projections until MMSD's 4K program is fully developed and relatively stable for several years. Kindergarten classes are projected by comparing local historical births against kindergarten class sizes to determine what percentage of live births we can expect to enroll in MMSD as kindergarteners. Historical births come from the Wisconsin Department of Health Services (DHS) and are available through 2012.

Projections do not formally take into account future architectural developments. Projecting the number of students who will live in a yet-to-be-built building or residential area is extremely difficult to do with any degree of reliability, as it is uncertain when children will move in and where they will come from. New construction does not necessarily mean that MMSD enrollment will increase; instead, students may simply move from other parts of the district. In addition, housing and employment patterns are subject to random and unpredictable variance, so implying that we can make these kinds of projections reliably would be irresponsible. When future large-scale development in an area is relatively certain, this information is used for planning purposes on a case-by-case basis, particularly in conversations around school capacity, but we do not adjust projections based on ambiguous future development.

Projected kindergarteners are then assigned to elementary schools based on the current distribution of kindergarteners. Subsequent grades are projected based on historical grade-to-grade persistence rates, with 5th and 8th grade students projected to 6th and 9th grade schools based on the share of 5th and 8th graders from the prior year enrolling at each middle and high school during the current year, respectively. This methodology mirrors best practices across school districts according to a 2013 study of enrollment projection methodology conducted for MMSD by Hanover Research.



The 2013-14 K-12 enrollment of 25,107 students is the highest in more than 30 years. K-12 enrollment in MMSD has remained relatively flat for the last six years, increasing by fewer than 1,000 students. We project that this trend of slight enrollment increases will continue over the next five years.



By Grade and Level

Grade	History						Projections				
	08-09	09-10	10-11	11-12	12-13	13-14	14-15	15-16	16-17	17-18	18-19
K	2006	2146	2233	2204	2257	2271	2183	2132	2205	2278	2294
1	1991	2009	2103	2198	2171	2176	2232	2145	2095	2167	2240
2	2030	1947	1955	2083	2148	2079	2122	2177	2092	2043	2113
3	1834	2003	1918	1917	2033	2071	2033	2075	2129	2046	1998
4	1775	1821	1951	1896	1861	1990	2032	1995	2036	2088	2007
5	1727	1779	1800	1954	1835	1829	1956	1997	1961	2001	2053
Elementary Total	11363	11705	11960	12252	12305	12416	12558	12520	12517	12623	12704
6	1731	1654	1707	1769	1882	1789	1770	1894	1933	1898	1937
7	1689	1700	1648	1706	1710	1825	1759	1740	1861	1900	1866
8	1759	1673	1704	1664	1710	1719	1834	1767	1749	1871	1910
Middle Total	5179	5027	5059	5139	5302	5333	5363	5401	5544	5669	5712
9	1877	1834	1733	1802	1742	1798	1807	1928	1858	1838	1966
10	1951	1773	1848	1759	1786	1741	1798	1807	1928	1858	1838
11	1902	2056	1959	2102	1967	1974	1924	1987	1996	2130	2053
12	1917	1899	1912	1807	1909	1845	1836	1789	1848	1857	1981
High Total	7647	7562	7452	7470	7404	7358	7364	7510	7629	7682	7838
Total	24189	24294	24471	24861	25011	25107	25285	25432	25690	25975	26254
Change		105	177	390	150	96	178	147	258	285	279

Because birth rates declined from 2007 to 2010, we project that kindergarten classes will decrease in size over the next several years, leading to lower elementary school enrollments. However, birth rates began to increase in 2011 and 2012, so the decline in elementary school enrollment is likely to reverse. Middle and high school enrollments are likely to continue to increase in the short term as the relatively large current elementary school classes progress through MMSD.

In addition to the K-12 students listed above, a total of 1,962 students are enrolled in MMSD 4K programs.

By School and Grade

Projections by school and grade begin on the next page. These projections use the same methodology as higher-level projections. However, they are subject to a much higher degree of variability because even a small amount of unanticipated mobility or development can change local enrollments significantly. In addition, these projections are less reliable further into the future. Nonetheless, they can help schools establish plans by grade level and observe the likely progression of unusually large or small classes. Due to rounding and the presence of alternative programs, the sum of projections by school and grade for each year will differ slightly from the overall projections presented above.

Next Steps & Strategies

Enrollment projections are used by the Assistant Superintendents to calculate future staff allocations and used by principals to plan at the school level.

The Applied Population Lab (APL) at the University of Wisconsin-Madison conducts enrollment projections for districts across the state and employs an advanced model that uses migration data and housing permits in addition to the data used by MMSD. We will investigate how results from this model compare to MMSD's model and assess the best option for projections moving forward.



SCHOOL	YEAR	KG	1	2	3	4	5	6	7	8	9	10	11	12	Total K-12
ALLIS	2013-14	74	65	58	61	72	58								388
ALLIS	2014-15	71	73	63	57	60	71								395
ALLIS	2015-16	69	70	71	62	56	59								387
ALLIS	2016-17	72	68	68	69	61	55								393
ALLIS	2017-18	74	71	67	67	68	60								406
ALLIS	2018-19	75	73	69	65	65	67								414
CHAVEZ	2013-14	137	105	112	97	105	82								638
CHAVEZ	2014-15	132	135	102	110	95	103								677
CHAVEZ	2015-16	129	129	131	100	107	94								690
CHAVEZ	2016-17	133	126	126	128	98	106								718
CHAVEZ	2017-18	137	131	123	123	126	97								737
CHAVEZ	2018-19	138	135	127	121	121	124								766
CRESTWOOD	2013-14	69	66	58	68	63	71								395
CRESTWOOD	2014-15	66	68	64	57	67	62								384
CRESTWOOD	2015-16	65	65	66	63	56	66								380
CRESTWOOD	2016-17	67	64	64	65	62	55								375
CRESTWOOD	2017-18	69	66	62	62	63	61								383
CRESTWOOD	2018-19	70	68	64	61	61	62								386
ELVEHJEM	2013-14	68	75	55	97	73	70								438
ELVEHJEM	2014-15	65	67	73	54	95	72								426
ELVEHJEM	2015-16	64	64	65	72	53	94								411
ELVEHJEM	2016-17	66	63	63	64	70	52								377
ELVEHJEM	2017-18	68	65	61	61	63	69								387
ELVEHJEM	2018-19	69	67	63	60	60	61								380
EMERSON	2013-14	70	72	68	59	50	39								358
EMERSON	2014-15	67	69	70	67	58	49								380
EMERSON	2015-16	66	66	67	69	65	57								390
EMERSON	2016-17	68	65	64	66	67	64								394
EMERSON	2017-18	70	67	63	63	64	66								394
EMERSON	2018-19	71	69	65	62	62	63								392
FALK	2013-14	43	50	54	38	37	48								270
FALK	2014-15	41	42	49	53	37	36								259
FALK	2015-16	40	41	41	48	52	37								258
FALK	2016-17	42	40	40	40	47	51								259
FALK	2017-18	43	41	39	39	40	46								247
FALK	2018-19	43	42	40	38	38	39								241
FRANKLIN	2013-14	114	123	119											356
FRANKLIN	2014-15	110	112	120											342
FRANKLIN	2015-16	107	108	109											324
FRANKLIN	2016-17	111	105	105											321
FRANKLIN	2017-18	114	109	103											326
FRANKLIN	2018-19	115	112	106											334
GLENDALE	2013-14	78	88	72	65	63	58								424
GLENDALE	2014-15	75	77	86	70	64	62								434
GLENDALE	2015-16	73	74	75	84	69	63								437
GLENDALE	2016-17	76	72	72	73	82	68								443
GLENDALE	2017-18	78	74	70	70	72	81								446



SCHOOL	YEAR	KG	1	2	3	4	5	6	7	8	9	10	11	12	Total K-12
GLENDALE	2018-19	79	77	73	69	69	71								436
GOMPERS	2013-14	47	43	49	45	42	32								258
GOMPERS	2014-15	45	46	42	48	44	41								267
GOMPERS	2015-16	44	44	45	41	47	43								265
GOMPERS	2016-17	46	43	43	44	40	46								263
GOMPERS	2017-18	47	45	42	42	43	40								259
GOMPERS	2018-19	47	46	44	41	42	42								263
HAWTHORNE	2013-14	79	57	61	58	57	63								375
HAWTHORNE	2014-15	76	78	56	60	57	56								382
HAWTHORNE	2015-16	74	75	76	54	59	56								393
HAWTHORNE	2016-17	77	73	73	74	53	58								407
HAWTHORNE	2017-18	79	75	71	71	73	52								422
HAWTHORNE	2018-19	80	78	74	70	70	71								442
HUEGEL	2013-14	76	97	86	54	75	72								460
HUEGEL	2014-15	73	75	95	84	53	74								453
HUEGEL	2015-16	71	72	73	92	83	52								443
HUEGEL	2016-17	74	70	70	71	91	81								457
HUEGEL	2017-18	76	73	68	68	70	89								445
HUEGEL	2018-19	77	75	71	67	67	69								425
KENNEDY	2013-14	96	101	96	102	88	90								573
KENNEDY	2014-15	92	94	98	94	100	87								566
KENNEDY	2015-16	90	91	92	96	92	98								560
KENNEDY	2016-17	93	89	88	90	94	91								545
KENNEDY	2017-18	96	92	86	86	88	93								542
KENNEDY	2018-19	97	95	89	84	85	87								537
LAKE VIEW	2013-14	56	40	48	54	42	41								281
LAKE VIEW	2014-15	54	55	39	47	53	41								289
LAKE VIEW	2015-16	53	53	54	38	46	52								295
LAKE VIEW	2016-17	54	52	52	52	37	45								293
LAKE VIEW	2017-18	56	53	50	50	51	37								299
LAKE VIEW	2018-19	57	55	52	49	49	51								313
LAPHAM	2013-14	88	75	75											238
LAPHAM	2014-15	85	87	73											244
LAPHAM	2015-16	83	83	84											250
LAPHAM	2016-17	85	81	81											248
LAPHAM	2017-18	88	84	79											251
LAPHAM	2018-19	89	87	82											258
LEOPOLD	2013-14	156	89	125	116	113	81								680
LEOPOLD	2014-15	150	153	87	122	114	111								737
LEOPOLD	2015-16	146	147	150	85	120	112								760
LEOPOLD	2016-17	151	144	144	146	83	118								786
LEOPOLD	2017-18	157	149	140	141	143	82								812
LEOPOLD	2018-19	158	154	145	137	138	141								873
LINCOLN	2013-14		7	8	121	124	129								389
LINCOLN	2014-15				130	119	122								371
LINCOLN	2015-16				133	128	117								378
LINCOLN	2016-17				161	131	125								418



SCHOOL	YEAR	KG	1	2	3	4	5	6	7	8	9	10	11	12	Total K-12
LINCOLN	2017-18				155	158	129								442
LINCOLN	2018-19				151	152	155								459
LINDBERGH	2013-14	34	50	41	36	38	39								238
LINDBERGH	2014-15	33	33	49	40	35	37								228
LINDBERGH	2015-16	32	32	33	48	39	35								218
LINDBERGH	2016-17	33	31	31	32	47	39								213
LINDBERGH	2017-18	34	32	31	31	31	46								205
LINDBERGH	2018-19	34	34	32	30	30	31								190
LOWELL	2013-14	52	52	49	59	47	55								314
LOWELL	2014-15	50	51	51	48	58	46								304
LOWELL	2015-16	49	49	50	50	47	57								301
LOWELL	2016-17	50	48	48	49	49	46								290
LOWELL	2017-18	52	50	47	47	48	48								291
LOWELL	2018-19	53	51	48	46	46	47								291
MARQUETTE	2013-14				69	82	90								241
MARQUETTE	2014-15				73	68	81								222
MARQUETTE	2015-16				72	72	67								210
MARQUETTE	2016-17				82	70	71								223
MARQUETTE	2017-18				79	81	69								229
MARQUETTE	2018-19				77	78	80								235
MENDOTA	2013-14	44	52	51	63	36	33								279
MENDOTA	2014-15	42	43	51	50	62	35								283
MENDOTA	2015-16	41	42	42	50	49	61								284
MENDOTA	2016-17	43	41	41	41	49	48								262
MENDOTA	2017-18	44	42	40	40	40	48								254
MENDOTA	2018-19	44	43	41	39	39	40								246
MIDVALE	2013-14	172	140	133											445
MIDVALE	2014-15	165	169	137											471
MIDVALE	2015-16	161	162	165											489
MIDVALE	2016-17	167	159	158											484
MIDVALE	2017-18	173	164	155											491
MIDVALE	2018-19	174	170	160											503
MUIR	2013-14	67	79	71	66	61	61								405
MUIR	2014-15	64	66	77	69	65	60								401
MUIR	2015-16	63	63	64	75	68	64								397
MUIR	2016-17	65	62	62	63	74	67								392
MUIR	2017-18	67	64	60	60	62	73								386
MUIR	2018-19	68	66	62	59	59	61								375
NUESTRO MUNDO	2013-14	54	54	51	48	48	48								303
NUESTRO MUNDO	2014-15	52	53	53	50	47	47								302
NUESTRO MUNDO	2015-16	51	51	52	51	49	46								300
NUESTRO MUNDO	2016-17	52	50	50	51	51	48								301
NUESTRO MUNDO	2017-18	54	52	49	49	50	50								302
NUESTRO MUNDO	2018-19	55	53	50	48	48	49								302
OLSON	2013-14	74	82	78	76	70	67								447
OLSON	2014-15	71	73	80	76	75	69								443
OLSON	2015-16	69	70	71	78	75	73								437



SCHOOL	YEAR	KG	1	2	3	4	5	6	7	8	9	10	11	12	Total K-12
OLSON	2016-17	72	68	68	69	77	74								428
OLSON	2017-18	74	71	67	67	68	75								422
OLSON	2018-19	75	73	69	65	65	67								414
ORCH RIDGE	2013-14	60	63	53	40	54	43								313
ORCH RIDGE	2014-15	58	59	61	52	39	53								322
ORCH RIDGE	2015-16	56	57	58	60	51	39								320
ORCH RIDGE	2016-17	58	55	55	56	59	50								334
ORCH RIDGE	2017-18	60	57	54	54	55	58								339
ORCH RIDGE	2018-19	61	59	56	53	53	54								336
RANDALL	2013-14			2	134	124	119								379
RANDALL	2014-15				116	131	122								370
RANDALL	2015-16				117	114	129								361
RANDALL	2016-17				107	115	112								334
RANDALL	2017-18				103	105	113								321
RANDALL	2018-19				100	101	103								304
SANDBURG	2013-14	75	60	73	73	56	44								381
SANDBURG	2014-15	72	74	59	71	72	55								402
SANDBURG	2015-16	70	71	72	57	70	70								411
SANDBURG	2016-17	73	69	69	70	56	69								406
SANDBURG	2017-18	75	72	67	68	69	55								406
SANDBURG	2018-19	76	74	70	66	66	68								420
SCHENK	2013-14	72	90	65	81	58	56								422
SCHENK	2014-15	69	71	88	64	79	57								428
SCHENK	2015-16	68	68	69	86	62	78								431
SCHENK	2016-17	70	66	66	67	84	61								416
SCHENK	2017-18	72	69	65	65	66	83								420
SCHENK	2018-19	73	71	67	63	64	65								403
SHOREWOOD	2013-14	86	87	81	73	73	65								465
SHOREWOOD	2014-15	83	85	85	79	72	72								475
SHOREWOOD	2015-16	81	81	82	83	78	70								475
SHOREWOOD	2016-17	83	79	79	81	81	76								480
SHOREWOOD	2017-18	86	82	77	77	79	80								482
SHOREWOOD	2018-19	87	85	80	76	76	78								481
STEPHENS	2013-14	93	84	71	73	91	64								476
STEPHENS	2014-15	89	91	82	69	72	89								493
STEPHENS	2015-16	87	88	89	80	68	70								483
STEPHENS	2016-17	90	86	86	87	79	67								494
STEPHENS	2017-18	93	89	84	84	86	77								512
STEPHENS	2018-19	94	92	87	82	82	84								520
THOREAU	2013-14	72	61	59	78	71	48								389
THOREAU	2014-15	69	71	59	58	77	70								403
THOREAU	2015-16	68	68	69	58	57	75								395
THOREAU	2016-17	70	66	66	67	57	56								383
THOREAU	2017-18	72	69	65	65	66	56								393
THOREAU	2018-19	73	71	67	63	64	65								403
VAN HISE	2013-14	65	69	57	67	77	63								398
VAN HISE	2014-15	62	64	67	56	66	76								391



SCHOOL	YEAR	KG	1	2	3	4	5	6	7	8	9	10	11	12	Total K-12
VAN HISE	2015-16	61	61	62	66	55	65								370
VAN HISE	2016-17	63	60	60	61	65	54								362
VAN HISE	2017-18	65	62	58	59	60	63								367
VAN HISE	2018-19	66	64	60	57	57	59								364
BADGER ROCK	2013-14							12	43	37					92
BADGER ROCK	2014-15							40	12	43					95
BADGER ROCK	2015-16							40	40	12					92
BADGER ROCK	2016-17							40	40	40					120
BADGER ROCK	2017-18							40	39	40					120
BADGER ROCK	2018-19							40	39	40					119
BLACK HAWK	2013-14							130	149	116					395
BLACK HAWK	2014-15							124	128	150					402
BLACK HAWK	2015-16							132	122	128					383
BLACK HAWK	2016-17							157	130	123					410
BLACK HAWK	2017-18							150	155	131					435
BLACK HAWK	2018-19							142	147	155					445
CHEROKEE	2013-14							152	185	172					509
CHEROKEE	2014-15							138	149	186					473
CHEROKEE	2015-16							182	135	150					467
CHEROKEE	2016-17							185	179	136					500
CHEROKEE	2017-18							177	181	179					537
CHEROKEE	2018-19							147	172	182					501
HAMILTON	2013-14							275	279	240					794
HAMILTON	2014-15							272	270	280					823
HAMILTON	2015-16							292	268	272					831
HAMILTON	2016-17							286	287	269					842
HAMILTON	2017-18							267	281	288					836
HAMILTON	2018-19							282	263	282					827
INNOVATIVE & ALT. MIDDLE	2013-14								1	6					7
INNOVATIVE & ALT. MIDDLE	2014-15								1	6					7
INNOVATIVE & ALT. MIDDLE	2015-16								1	6					7
INNOVATIVE & ALT. MIDDLE	2016-17								1	6					7
INNOVATIVE & ALT. MIDDLE	2017-18								1	6					7
INNOVATIVE & ALT. MIDDLE	2018-19								1	6					7
JEFFERSON	2013-14							176	180	194					550
JEFFERSON	2014-15							171	173	181					525
JEFFERSON	2015-16							182	168	174					524
JEFFERSON	2016-17							170	179	169					517
JEFFERSON	2017-18							173	167	180					519
JEFFERSON	2018-19							187	170	168					524
O'KEEFFE	2013-14							144	154	146					444
O'KEEFFE	2014-15							170	142	155					466
O'KEEFFE	2015-16							151	167	142					461
O'KEEFFE	2016-17							149	149	168					466
O'KEEFFE	2017-18							144	147	149					440
O'KEEFFE	2018-19							142	142	147					430
SENNETT	2013-14							214	212	180					606



SCHOOL	YEAR	KG	1	2	3	4	5	6	7	8	9	10	11	12	Total K-12
SENNETT	2014-15							221	210	213					645
SENNETT	2015-16							237	217	211					666
SENNETT	2016-17							246	233	219					698
SENNETT	2017-18							212	242	234					689
SENNETT	2018-19							245	209	243					697
SHERMAN	2013-14							160	130	131					421
SHERMAN	2014-15							131	157	131					419
SHERMAN	2015-16							146	128	158					433
SHERMAN	2016-17							175	144	129					448
SHERMAN	2017-18							174	172	144					491
SHERMAN	2018-19							163	171	173					507
SPRING HARBOR	2013-14							90	90	88					268
SPRING HARBOR	2014-15							90	88	90					269
SPRING HARBOR	2015-16							90	88	89					267
SPRING HARBOR	2016-17							90	88	89					267
SPRING HARBOR	2017-18							90	88	89					267
SPRING HARBOR	2018-19							90	88	89					267
TOKI	2013-14							189	165	169					523
TOKI	2014-15							202	186	166					554
TOKI	2015-16							228	199	187					613
TOKI	2016-17							198	224	200					622
TOKI	2017-18							239	195	225					659
TOKI	2018-19							244	235	196					675
WHITEHORSE	2013-14							161	153	155					469
WHITEHORSE	2014-15							144	158	154					456
WHITEHORSE	2015-16							173	141	159					473
WHITEHORSE	2016-17							151	170	142					463
WHITEHORSE	2017-18							173	149	171					492
WHITEHORSE	2018-19							151	170	149					319
WRIGHT	2013-14							86	84	85					255
WRIGHT	2014-15							85	85	84					254
WRIGHT	2015-16							85	85	85					255
WRIGHT	2016-17							85	85	85					255
WRIGHT	2017-18							85	85	85					255
WRIGHT	2018-19							85	85	85					255
DCP	2013-14												9	32	41
DCP	2014-15												9	32	41
DCP	2015-16												9	32	41
DCP	2016-17												9	32	41
DCP	2017-18												9	32	41
DCP	2018-19												9	32	41
EAST	2013-14										412	378	470	348	1608
EAST	2014-15										442	412	418	437	1709
EAST	2015-16										436	442	455	388	1722
EAST	2016-17										427	436	489	423	1775
EAST	2017-18										433	427	481	455	1796
EAST	2018-19										482	433	472	448	1835



SCHOOL	YEAR	KG	1	2	3	4	5	6	7	8	9	10	11	12	Total K-12
INNOVATIVE & ALT. HIGH	2013-14										8	20	69	148	245
INNOVATIVE & ALT. HIGH	2014-15										8	20	69	148	245
INNOVATIVE & ALT. HIGH	2015-16										8	20	69	148	245
INNOVATIVE & ALT. HIGH	2016-17										8	20	69	148	245
INNOVATIVE & ALT. HIGH	2017-18										8	20	69	148	245
INNOVATIVE & ALT. HIGH	2018-19										8	20	69	148	245
LAFOLLETTE	2013-14										393	340	386	357	1476
LAFOLLETTE	2014-15										406	393	376	359	1534
LAFOLLETTE	2015-16										409	406	434	349	1599
LAFOLLETTE	2016-17										398	409	449	404	1660
LAFOLLETTE	2017-18										446	398	452	417	1714
LAFOLLETTE	2018-19										435	446	440	421	1742
MEMORIAL	2013-14										471	466	494	401	1832
MEMORIAL	2014-15										468	471	515	459	1914
MEMORIAL	2015-16										478	468	520	479	1946
MEMORIAL	2016-17										486	478	517	484	1965
MEMORIAL	2017-18										525	486	529	481	2020
MEMORIAL	2018-19										484	525	537	492	2037
METRO HI	2013-14										3	2	9	7	21
METRO HI	2014-15										3	2	9	7	21
METRO HI	2015-16										3	2	9	7	21
METRO HI	2016-17										3	2	9	7	21
METRO HI	2017-18										3	2	9	7	21
METRO HI	2018-19										3	2	9	7	21
SHABAZZ	2013-14										1	15	30	57	103
SHABAZZ	2014-15										1	15	30	57	103
SHABAZZ	2015-16										1	15	30	57	103
SHABAZZ	2016-17										1	15	30	57	103
SHABAZZ	2017-18										1	15	30	57	103
SHABAZZ	2018-19										1	15	30	57	103
WEST	2013-14										510	520	507	495	2032
WEST	2014-15										571	510	575	472	2127
WEST	2015-16										528	571	564	534	2197
WEST	2016-17										511	528	631	524	2194
WEST	2017-18										574	511	584	587	2256
WEST	2018-19										570	574	565	543	2252



Internal Transfer Report Fall 2013

Key Findings

1. Most students attend the expected school based on where they live.
2. At the elementary level, the percent of students living in an attendance area who choose to transfer to another MMSD school ranges from 0.2% (Shorewood) to 35.4% (Mendota).
3. Middle school transfers out range from 2.7% (Hamilton) to 21.9% (Sherman).
4. High school transfers out range from 5.3% (West) to 8.2% (La Follette), not including alternative programs.

Methodology

This report presents data on internal transfers for 2013-14. Internal transfers are identified for this based on the attendance boundary where students live and the school they attend. Internal transfer requests are reviewed on a case-by-case basis and may be approved or denied based on the capacity of the school to accommodate the student.

This report does not reflect open enrollment out of the district, which will be covered in its own distinct report. Enrollment counts and attendance boundaries are based on the third Friday in September, the first official enrollment date for state reporting purposes and the standard enrollment date used for historical enrollment counts in MMSD.

Boxes containing students who are attending the expected school(s) based on their residence are shaded in tan. Internal transfer rates are calculated based on students not attending the expected school (not shaded in tan). Due to the Family Educational Rights and Privacy Act (FERPA), we suppress student counts of six or fewer (SPR).

Notes on Attendance Zones

This report presents internal transfer figures for some students living in optional or assigned attendance zones (denoted as Zone Allied El Asg, Zone Opt Toki/Jef, etc.). The optional high school attendance zone was created many years ago to allow low-income minority students to have a choice of schools in the wake of integration. Middle school optional attendance zones were created because some students live within walking distance of a school that is not the school they typically would attend. Students living in the Allied Assigned attendance area are assigned to one of three schools to prevent a high concentration of low-income students in a single school. Nuestro Mundo, Badger Rock, and Wright are charter schools, although they all draw students primarily from specific attendance areas.

The sum of students in the "Out of District" attendance zone does not equal the sum of open enrollment enterers presented in the Open Enrollment Report (2013-11-3) because some students may move shortly before the school year and thus not count as open enrollment enterers, and because some students attend under the "senior status rule," which means that students reaching senior status can continue going to school in the same district even if they move.

Next Steps & Strategies

During 2013-14, Enrollment Office staff will review the internal transfer approval process and related policies. Information on internal transfers also contributes to the district's long-range facilities plan and school-level support.



Elementary Internal Transfers

The table of elementary internal transfers appears on the next page. The percentage of students living in each attendance area who transfer out ranges from a low of 0.2% (Shorewood) to a high of 35.4% (Mendota). However, Mendota does not offer any services for English Language Learners (ELL); 60 of the 140 transfers out of Mendota are ELL, so Mendota's transfer out rate may be misleadingly high. Mendota will add ELL services beginning in January 2014. The second highest rate of transfers out is 33.2% (Falk).

Schools with the lowest net transfers (transfers in minus transfers out) are Mendota (-116), Falk (-82), and Leopold (-75). Schools with the highest net transfers are Shorewood (64), Glendale (57), and Lindbergh (50). Fifty-two ELL students living in the Mendota attendance area enrolled at Lindbergh, the closest elementary school offering ELL services, which likely explains Lindbergh's high net transfer number. Glendale has a Dual Language Immersion (DLI) program that draws native Spanish speakers from the Kennedy and Elvehjem attendance areas.



Elementary Internal Transfers

School/Attended	Attendance Area of Residence																										Total	Transfers In	Transfer In%	Net Transfer												
	Allis Elementary	Chavez Elementary	Crestwood Elementary	Eveljhem Elementary	Emerson Elementary	Falk Elementary	Franklin Elementary	Glendale Elementary	Gompers Elementary	Hawthorne Elementary	Huegel Elementary	Kennedy Elementary	Lake View Elementary	Lapham Elementary	Leopold Elementary	Lincoln Elementary	Lindbergh Elementary	Lowell Elementary	Marquette Elementary	Mendota Elementary	Midvale Elementary	Muir Elementary	Olson Elementary	Orchard Ridge Elementary	Randall Elementary	Sandburg Elementary					Schenk Elementary	Shorewood Elementary	Stephens Elementary	Thoreau Elementary	Van Hise Elementary	Zone Alled El Agg	Out of District					
Allis Elementary	365			SPR	SPR	SPR	SPR	SPR		SPR				SPR	SPR	SPR																	SPR	388	23	5.9%	-42					
Chavez Elementary	SPR	570				12	SPR				13				11	SPR							SPR	SPR					SPR	SPR		SPR	10	638	68	10.7%	37					
Crestwood Elementary	SPR		259	SPR		11								SPR	SPR	SPR					SPR	SPR	SPR	SPR		SPR	SPR		SPR	SPR	SPR	SPR	84	SPR	395	52	13.2%	30				
Eveljhem Elementary	SPR			389	SPR			SPR	SPR	SPR		12		SPR	SPR		SPR			SPR						SPR	SPR			SPR			SPR	438	49	11.2%	-6					
Emerson Elementary	SPR	SPR			311				SPR			SPR	SPR	SPR		SPR				9				SPR	SPR		SPR	8				SPR	SPR	358	47	13.1%	-31					
Falk Elementary						235					9				SPR	SPR	SPR	SPR													SPR	SPR	SPR	SPR	270	35	13.0%	-82				
Franklin Elementary			SPR		SPR		158						SPR			SPR									SPR	183		SPR			SPR	SPR		356	15	4.2%	-4					
Glendale Elementary	14	SPR		16	SPR	SPR	SPR	333		SPR		24	SPR			SPR							SPR	SPR			SPR	9			SPR	SPR	SPR	SPR	424	91	21.5%	57				
Gompers Elementary									219								8			19							SPR	SPR					SPR	SPR	258	39	15.1%	22				
Hawthorne Elementary	SPR			SPR	11	SPR		SPR		324		SPR	SPR				SPR		SPR	SPR												SPR	SPR	SPR	SPR	375	51	13.6%	-3			
Huegel Elementary	SPR	SPR				17					414	SPR		SPR	SPR																	SPR	SPR	SPR	SPR	460	46	10.0%	-20			
Kennedy Elementary	SPR			11				SPR	SPR	SPR		515		SPR				SPR		SPR							SPR	15			SPR		SPR	SPR	573	58	10.1%	-12				
Lake View Elementary				SPR	15				SPR	SPR						219				26							SPR	SPR					SPR	SPR	SPR	281	62	22.1%	28			
Lapham Elementary	SPR	SPR			SPR								SPR	91				SPR	130	SPR	SPR												SPR		238	17	7.1%	-15				
Leopold Elementary	SPR	SPR	SPR		SPR	13	SPR				SPR				634	SPR							SPR	SPR									SPR	SPR	680	46	6.8%	-75				
Lincoln Elementary	7	SPR					SPR		SPR	SPR	SPR	SPR	SPR		11	240																SPR	SPR	SPR	SPR	389	48	12.3%	13			
Lindbergh Elementary					SPR												160			64													SPR	SPR	SPR	SPR	238	78	32.8%	50		
Lowell Elementary	SPR			SPR	SPR		SPR	SPR		SPR	SPR	SPR	SPR	SPR				274	SPR	SPR								SPR	SPR				SPR	SPR	SPR	314	40	12.7%	7			
Marquette Elementary				SPR	7			SPR	SPR	SPR	SPR	SPR	7	87		SPR	SPR	11	104	SPR	SPR												SPR		SPR	SPR	241	50	20.7%	38		
Mendota Elementary					SPR					SPR	SPR	SPR	SPR							255					SPR		SPR	SPR					SPR	SPR	SPR	279	24	8.6%	-116			
Midvale Elementary	SPR	SPR	SPR		SPR		SPR	SPR			SPR					266					138	SPR						SPR	SPR					SPR	SPR	SPR	445	41	9.2%	-13		
Muir Elementary			7	SPR	SPR	13					8				SPR	12	SPR																	SPR	SPR	SPR	SPR	405	67	16.5%	41	
Nuestro Mundo Elementary	215			9	SPR	SPR	SPR	8	SPR	10	SPR	7						SPR	SPR	SPR														SPR	SPR	SPR	20	303	88	29.0%	N/A	
Olson Elementary		SPR			SPR	14									28								SPR	372	7										SPR	SPR	SPR	447	75	16.8%	48	
Orchard Ridge Elementary	SPR	SPR			SPR	17	SPR							SPR	SPR	SPR									SPR	250								SPR	SPR	SPR	313	63	20.1%	18		
Randall Elementary	SPR				SPR		148	SPR		SPR		SPR		SPR	SPR	SPR				SPR	9	SPR												SPR	SPR	SPR	379	37	9.8%	28		
Sandburg Elementary	SPR			SPR	SPR				8			SPR	SPR	SPR	SPR					SPR								339	12					SPR	SPR	SPR	381	42	11.0%	2		
Schenk Elementary	SPR		SPR	SPR	SPR			SPR		11		8	SPR	SPR	SPR	SPR		SPR	SPR										SPR	374					SPR	SPR	SPR	422	48	11.4%	-33	
Shorewood Elementary	SPR	SPR	SPR						SPR		SPR		SPR		9	SPR						15	SPR												SPR	SPR	SPR	SPR	465	65	14.0%	64
Stephens Elementary	SPR	SPR	SPR			SPR				SPR	SPR				9	SPR									SPR	SPR	SPR	SPR								SPR	SPR	SPR	476	44	9.2%	14
Thoreau Elementary	SPR	SPR	SPR		SPR	SPR									14	SPR																				SPR	SPR	SPR	389	45	11.6%	0
Van Hise Elementary				SPR		SPR				SPR	SPR																									SPR	SPR	SPR	398	40	10.1%	17
Total	645	601	281	444	389	352	325	367	236	378	480	585	253	210	755	541	188	307	246	395	293	364	399	295	386	379	455	401	352	372	381	224	137	12416								
Transfers Out	65	31	22	55	78	117	19	34	17	54	66	70	34	32	121	35	28	33	12	140	54	26	27	45	9	40	81	SPR	30	45	23	13										
Transfer Out %	10.1%	5.2%	7.8%	12.4%	20.1%	33.2%	5.8%	9.3%	7.2%	14.3%	13.8%	12.0%	13.4%	15.2%	16.0%	6.5%	14.9%	10.7%	4.9%	35.4%	18.4%	7.1%	6.8%	15.3%	2.3%	10.6%	17.8%	0.2%	8.5%	12.1%	6.0%	5.8%										



Middle Internal Transfers

Attendance Area of Residence		Black Hawk Middle	Cherokee Middle	Hamilton Middle	Jefferson Middle	O'Keeffe Middle	Sennett Middle	Sherman Middle	Toki Middle	Whitehorse Middle	Zone Allied Ms Asg	Zone Opt Cher/Ham	Zone Opt Toki/Jef	Out of District	Total	Transfers In	Transfer In %	Net Transfer
School Attended	Badger Rock Middle		9	SPR	SPR	70	SPR	SPR	SPR	SPR	SPR	SPR	SPR	SPR	92	N/A	N/A	N/A
	Black Hawk Middle	364	SPR	SPR	SPR	SPR	18	SPR	SPR	SPR	SPR	SPR	SPR	SPR	395	31	7.8%	-8
	Cherokee Middle	SPR	461	SPR	SPR	SPR	SPR	SPR	13		13		SPR	7	509	35	6.9%	-45
	Hamilton Middle	SPR	23	687	15	SPR	SPR	SPR	11	SPR	SPR	36	SPR	10	794	71	8.9%	51
	Jefferson Middle		14	SPR	377	SPR		SPR	29	SPR		32	SPR	79	550	62	11.3%	31
	O'Keeffe Middle	14	SPR	SPR	SPR	352	8	47			12				444	92	20.7%	50
	Sennett Middle	SPR	17	SPR		9	514	12	SPR	35	SPR			7	606	92	15.2%	-23
	Sherman Middle	10	SPR	SPR		12	SPR	376			17				421	45	10.7%	-61
	Spring Harbor Middle		SPR		110		SPR			125		SPR		22	268	7	2.6%	N/A
	Toki Middle		7	1	10	1		3		461		12	SPR	20	523	30	5.7%	-43
	Whitehorse Middle	SPR	SPR		SPR	7	17	20	SPR		415				469	54	11.5%	-15
	Wright Middle			197	25		SPR	12	SPR	13		SPR	SPR	SPR	255	33	12.9%	N/A
	Innovative & Alternative						SPR	SPR	SPR		SPR	SPR			7	7	N/A	N/A
	Total		403	738	732	518	395	631	483	659	486	68	39	131	50	5333		
Transfers Out		39	80	20	31	42	115	106	73	69	6	3	10					
Transfer Out %		9.7%	10.8%	2.7%	6.0%	10.6%	18.2%	21.9%	11.1%	14.2%	8.8%	7.7%	7.6%					

Sherman (21.9%), Sennett (18.2%), and Whitehorse (14.2%) have the highest percentages of students transferring out, while Hamilton (2.7%), Jefferson (6.0%), and Black Hawk (9.7%) have the lowest percentages of students transferring out. O'Keeffe has the highest percentage of students attending who live in another attendance area (20.7%).

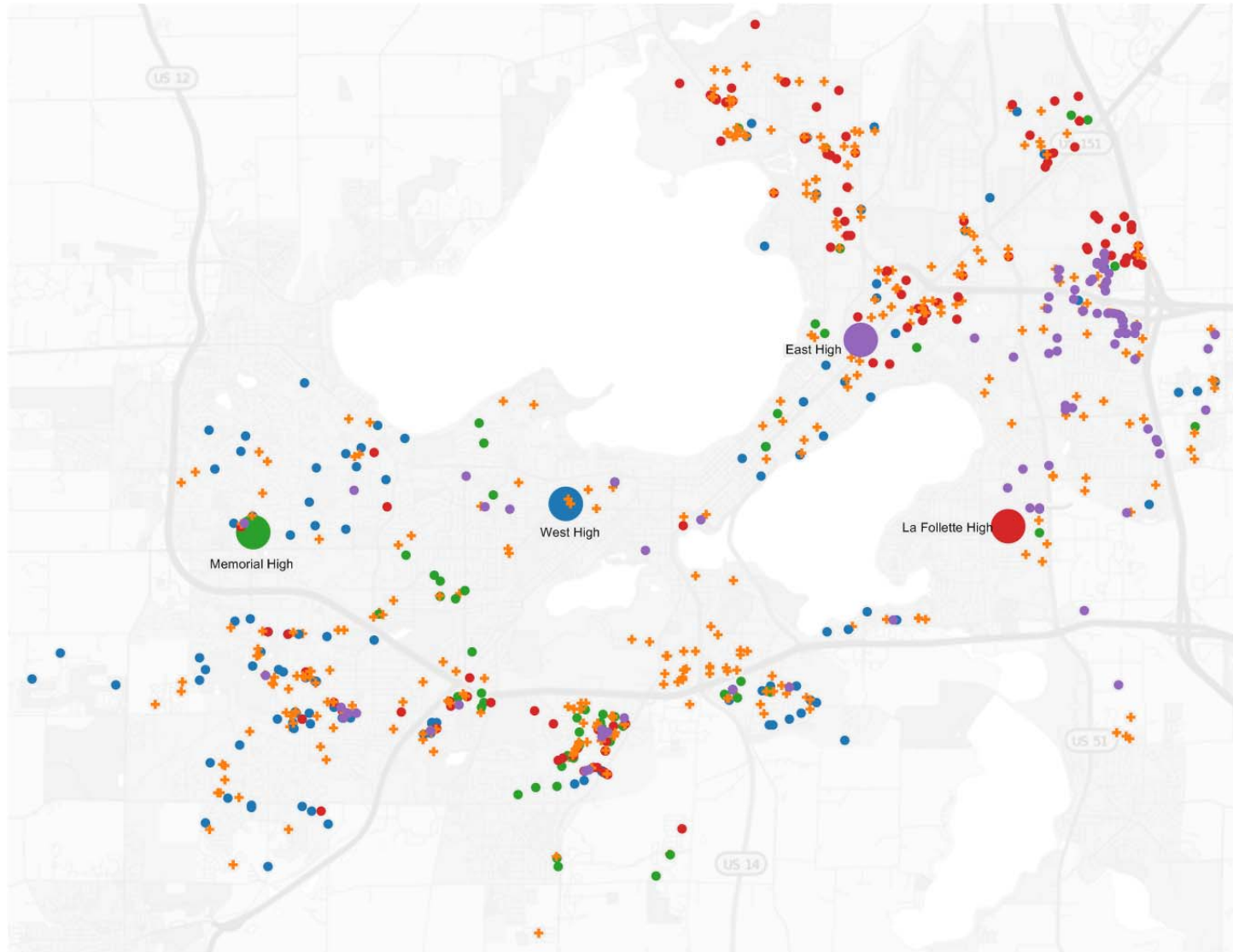


High Internal Transfers

Attendance Area of Residence	East High	La Follette High	Memorial High	West High	Zone Opt High School	Out of District	Total	Transfers In (not counting Zone Opt)	Transfers In (counting Zone Opt)	Transfer In % (not counting Zone Opt)	Transfer In % (counting Zone Opt)
East High	1475	82	12	13	7	19	1608	126	133	7.8%	8.3%
La Follette High	87	1276	27	23	35	28	1476	165	200	11.2%	13.6%
Memorial High	15	8	1675	58	31	45	1832	126	157	6.9%	8.6%
West High	30	32	87	1606	249	28	2032	177	426	8.7%	21.0%
East-DCP High	11	SPR			SPR	SPR	16	N/A			
West-DCP High	SPR	SPR	12	SPR	SPR	25					
Innovative & Alt High	64	57	64	45	25	11	266				
Shabazz High	45	19	13	18	SPR	7	103				
Total	1728	1480	1890	1769	352	139	7358				
Transfers Out (not incl. Alternatives)	132	122	126	94							
Transfers Out (incl. Alternatives)	253	204	215	163	N/A						
Transfer Out % (not incl. Alternatives)	7.6%	8.2%	6.7%	5.3%							
Transfer Out % (incl. Alternatives)	14.6%	13.8%	11.4%	9.2%							

West (5.3%) and Memorial (6.7%) have lower percentages transferring out than La Follette (8.2%) and East (7.6%), not including alternative school enrollment. Students living in the East attendance area comprise the largest share of students attending alternative programs.

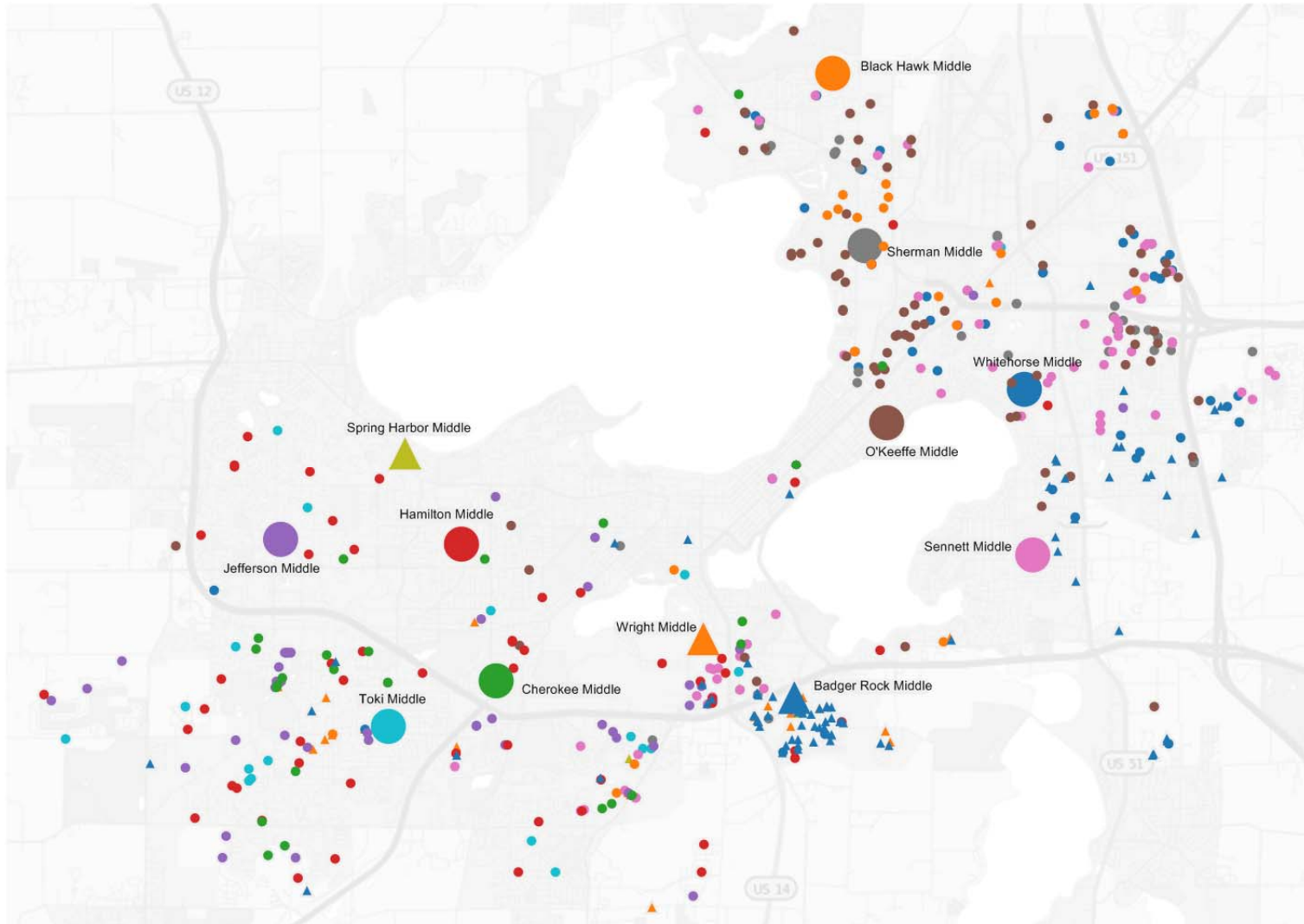
High Internal Transfer Homes and High Schools Attended



The map above shows MMSD high school students who transferred internally, including alternative programs, color coded and shaped by destination school. The color and shape of each dot correspond to the school they attend (orange crosses reflect Shabazz High and alternative programs). This map illustrates that most high school students who transferred internally transferred to the next closest school and that students in alternative programs come from across the district.



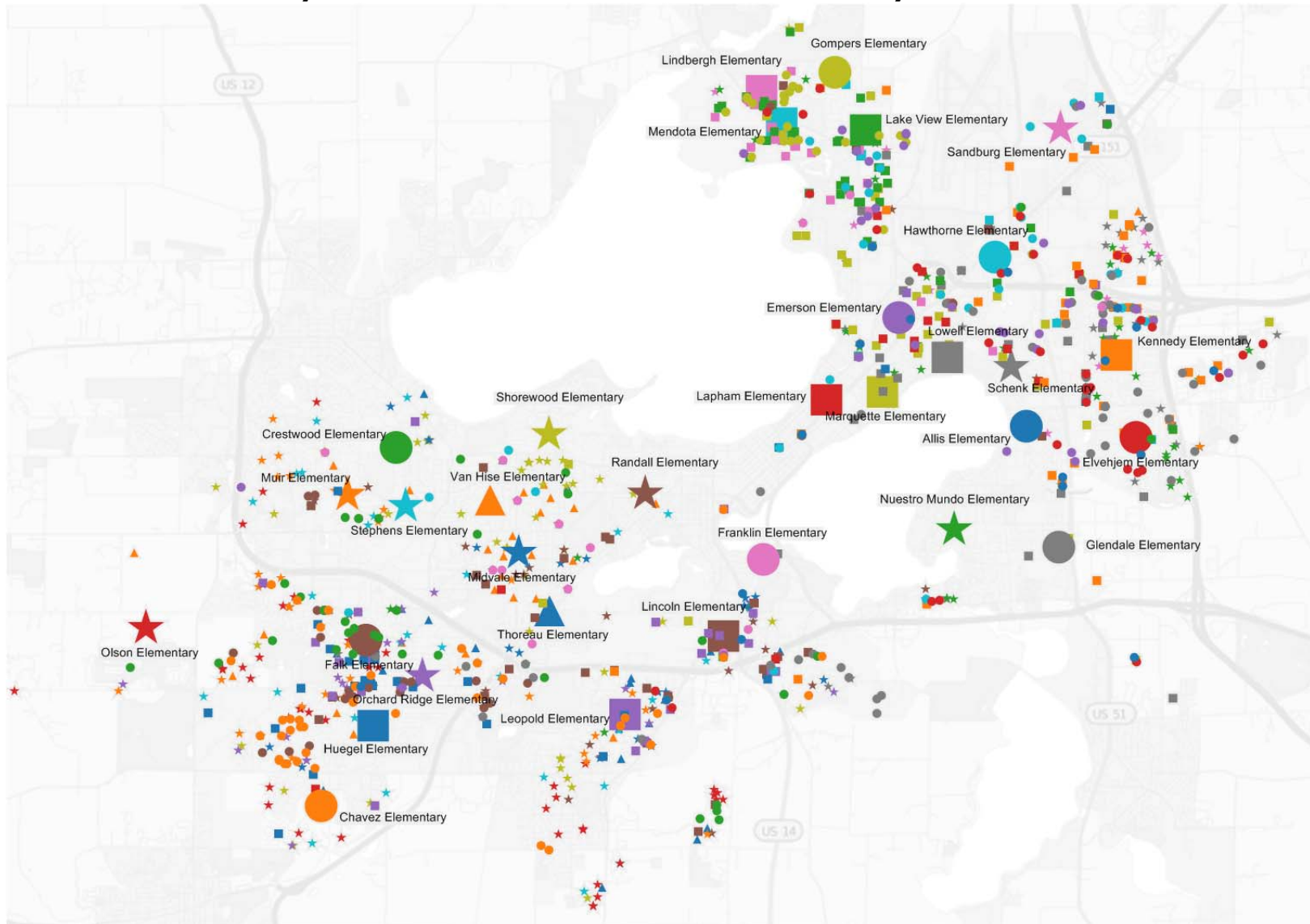
Middle Internal Transfer Homes and Middle Schools Attended



The map above shows MMSD middle school students who transferred internally, including alternative programs, color coded and shaped by destination school. The color and shape of each dot correspond to the school they attend. Lottery schools (Spring Harbor, Wright, and Badger Rock) are marked with triangles, although Spring Harbor and Wright have many students who are not considered internal transfers and thus do not appear on this map. This map shows that most internal transfers attend schools that are not far from their homes, although some schools draw from a broader geographical range.



Elementary Internal Transfer Homes and Elementary Schools Attended



The map above shows MMSD elementary school students who transferred internally, color coded and shaped by destination school. The color and shape of each dot correspond to the school they attend. Most internal transfers attend schools that are relatively close to their home.

Open Enrollment Report

Fall 2013

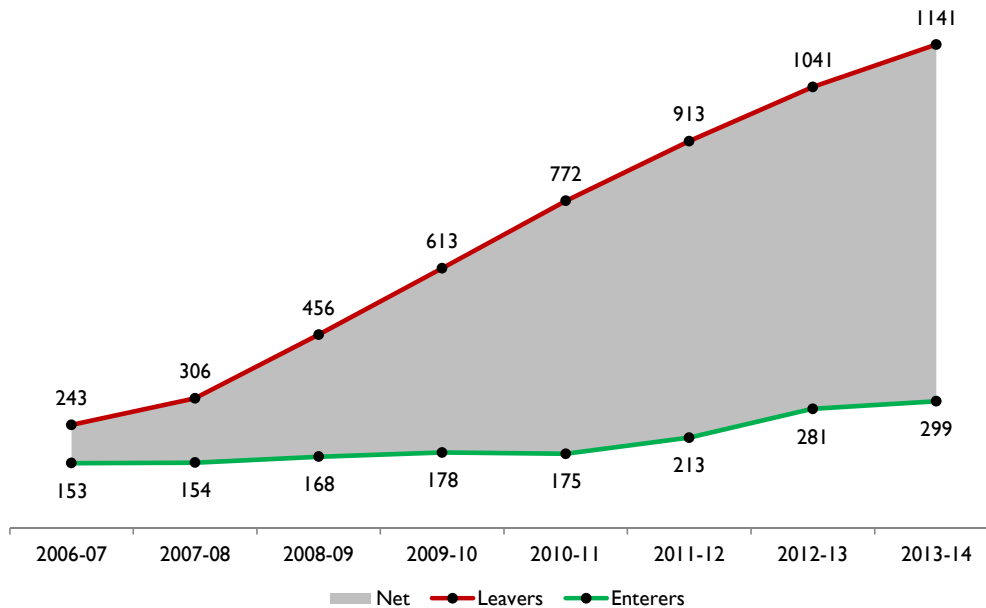
Key Findings

1. Although total open enrollment numbers have increased, the number of first-time open enrollment leavers decreased from 2012-13 to 2013-14 for the first time on record. The number of first-time leavers who had never enrolled in another district also decreased for the first time.
2. For the 2013-14 school year, MMSD has 1141 open enrollment leavers and 299 open enrollment enterers, for a net loss of 842 students due to open enrollment.
3. Open enrollment is highest in high school grades and lowest in middle school grades.
4. The most common open enrollment destinations for MMSD residents are McFarland, Monona, and Verona.
5. At the elementary level, Glendale (105) and Leopold (76) have the most leavers. Sennett (55) has the most middle school leavers, while Memorial (164) and La Follette (147) have the most high school leavers. Most of these students left MMSD to attend external districts in close proximity to their natural MMSD schools.

This report presents a history of open enrollment in MMSD, as well as detailed breakouts of open enrollment for the 2013-14 school year. Open enrollment in Wisconsin took effect for the 1998-99 school year, in which MMSD had fewer than 20 leavers.

Due to the Family Educational Rights and Privacy Act (FERPA), we suppress student counts of six or fewer (SPR).

Total 4K-12 Open Enrollment Leavers and Enterers

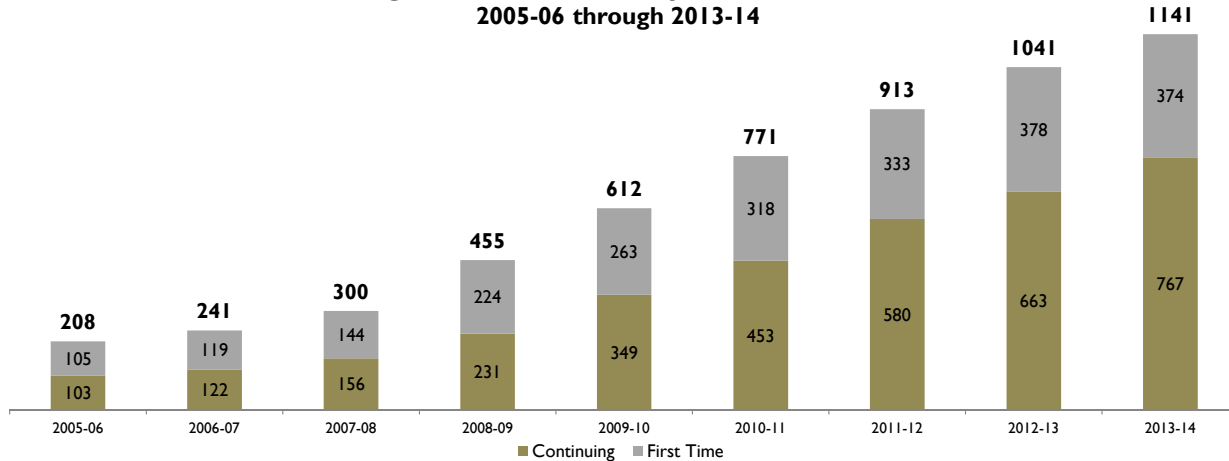


Year	2006-07	2007-08	2008-09	2009-10	2010-11	2011-12	2012-13	2013-14
Net Open Enrollment	-90	-152	-288	-435	-597	-700	-760	-842

For the 2013-14 school year, MMSD has 1141 leavers and 299 enterers for a net effect of 842 students choosing to attend a district other than MMSD.



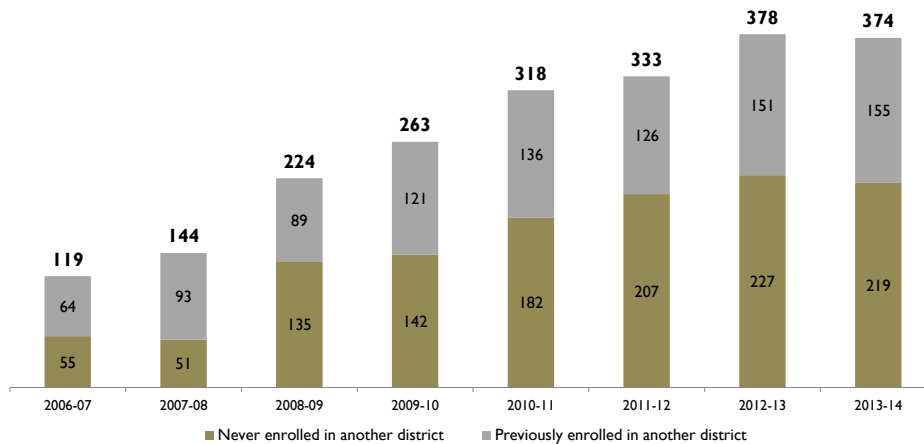
Continuing and First-Time Leavers Continuing versus First-Time Open Enrollment Leavers 2005-06 through 2013-14



Of the 1141 leavers for 2013-14, 767 are continuing leavers who open enrolled out of MMSD in previous years and 374 are first-time leavers. The total number of leavers has increased much faster than the number of first-time leavers each year due to the cumulative effect of open enrollment, although first-time leavers have more than tripled since 2006-07.

The 2013-14 school year is the first time on record that first-time open enrollment leavers decreased from the prior academic year. Although the decrease was small, if it continues into future years, then the cumulative increase in open enrollment leavers that Madison has observed for years is likely to slow and eventually reverse.

First-Time Leavers by Prior Enrollment



Of 374 first-time leavers in 2013-14, 155 were previously enrolled in another district and have moved to MMSD but chosen to continue their enrollment in that other district. About 60% of first-time leavers, 219 students in all, are first-time leavers who had never enrolled in another district. The number of first-time leavers who had never enrolled in another district decreased from 2012-13 to 2013-14. These students are a key subset of first-time leavers because their decision to leave the district is not related to prior enrollment elsewhere. If this number continues to decrease in future years as MMSD's population continues to grow, this may suggest that MMSD is having more success keeping students in the district.

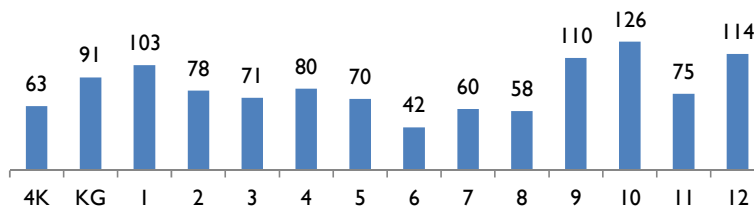


Characteristics of Open Enrollment Leavers

Race	Percent of 2013-14 Leavers	Percent of MMSD K-12
African American	8.6%	18.6%
Hispanic	9.7%	19.2%
Asian	5.9%	9.1%
White	68.1%	44.3%
Two or more races	6.7%	8.4%

Open enrollment leavers are disproportionately white relative to the MMSD student population. Other demographic characteristics of open enrollment leavers are unavailable.

2013-14 Leavers by Grade



A total of 154 leavers are in 4K or kindergarten. Open enrollment is highest in high school and lowest in middle school.

Destinations for Open Enrollment Leavers

District	Students	District	Students	District	Students	District	Students
De Forest	28	Middleton	148	No. Ozaukee	24	Sun Prairie	47
McFarland	259	Monona	235	Oregon	59	Verona	209
Merrill	16	Mt. Horeb	10	Stoughton	7	Waukesha	8
						Waubesa	61

Appleton, Cambridge, Cameron, Columbus, Deerfield, Dodgeville, Geneva, Genoa, Grantsburg, Hayward, Lodi, Monroe, Portage, Sauk Prairie, and Wisconsin Heights all have six or fewer open enrollment leavers from MMSD.

Fiscal Impact of Leavers

School Year	Open Enrollment Leavers Expense
2008-09	\$2,901,883
2009-10	\$3,959,737
2010-11	\$5,071,592
2011-12	\$5,532,301
2012-13	\$6,559,583
2013-14	\$7,813,686 (estimated)

The table above outlines the fiscal impact of open enrollment leavers for the past five years and the estimated open enrollment expense for 2013-14. The large increase from 2012-13 to 2013-14 reflects both an increase in total open enrollment leavers and an underestimate in open enrollment expenses for 2012-13.

The estimated open enrollment expense is offset partially by the estimated open enrollment income for 2013-14 of \$1,993,722. The expected net loss due to open enrollment is \$5,819,965.



The estimated expense and income for 2013-14 are based on the count of open enrollment leavers and the funding attached to each open enrollee, with weighting applied for expected attrition. The expected amount of transferred funds for each open enrollee for 2013-14 is \$6,485.

Notes on Optional Attendance Zones

This report presents internal transfer figures for some students living in optional or assigned attendance zones (denoted as Zone Allied El Asg, Zone Opt Toki/Jef, etc.). The optional high school attendance zone was created many years ago to allow low-income minority students to have a choice of schools in the wake of integration. Middle school optional attendance zones were created because some students live within walking distance of a school that is not the school they typically would attend. Students living in the Allied Assigned attendance area are assigned to one of three schools to prevent a high concentration of low-income students in a single school.

Next Steps & Strategies

Open enrollment data will inform the develop of a long-range facilities plan for MMSD, as well as helping to prioritize school-level support. In addition, open enrollment information will inform virtual course offerings that are included as part of MMSD's Technology Plan, currently under development.

Elementary Leavers by School and External District

The table of elementary school leavers by attendance area and external district attended appears on the next page. The schools with the highest number of open enrollment exits are Glendale (105) and Leopold (76). Seventy-eight of the 105 open enrollment leavers from Glendale enrolled in the McFarland School District, which is in close proximity to many parts of the Glendale attendance area. Similarly, the Leopold attendance area borders the Oregon and Verona school districts. Open enrollment clearly is most common for schools that are very close to other districts.

The most common open enrollment destinations for elementary school leavers are McFarland (140), Monona (96), and Verona (73). Most open enrollment leavers attend other districts in Dane County, although some choose to attend districts further away (such as Appleton and Northern Ozaukee), mainly though virtual academic programs. MMSD reported to DPI a total of 108 open enrollment leavers attending virtual schools.



Elementary Leavers by School and External District

Attendance area of residence	Non-MMSD District																				Total					
	Appleton	Cambridge	Cameron	Columbus	De Forest	Deerfield	Dodgeville	Geneva	Genoa	Hayward	McFarland	Merrill	Middleton	Monona	Monroe	Mt Horeb	No Ozaukee	Oregon	Portage	Stoughton		Sun Prairie	Verona	Waunakee	Wisconsin Heights	
Allis Elementary										SPR	9	SPR		13				SPR		SPR	SPR	SPR	SPR			36
Chavez Elementary							SPR				SPR	SPR	SPR			SPR							25	SPR		34
Crestwood Elementary					SPR						SPR		SPR													SPR
Elvehjem Elementary											13	SPR	SPR	23								SPR		SPR		47
Emerson Elementary											SPR							SPR						SPR		SPR
Falk Elementary	SPR										SPR		8	SPR				SPR					SPR			20
Franklin Elementary											SPR													SPR		SPR
Glendale Elementary		SPR			SPR						78			20				SPR	SPR		SPR					105
Gompers Elementary					SPR						SPR											SPR		SPR		14
Hawthorne Elementary					SPR						7			SPR								SPR		SPR		22
Huegel Elementary					SPR						SPR		8					SPR					7	SPR		21
Kennedy Elementary					SPR	SPR					9	SPR		14				SPR				SPR				34
Lake View Elementary											SPR			SPR											SPR	SPR
Lapham Elementary																									SPR	SPR
Leopold Elementary							SPR				SPR	SPR	SPR	SPR	SPR			42	SPR				23		SPR	76
Lincoln Elementary													SPR	SPR				SPR								SPR
Lindbergh Elementary					SPR						SPR														SPR	12
Lowell Elementary														SPR								SPR				SPR
Marquette Elementary								SPR	SPR																	SPR
Mendota Elementary												SPR		SPR										10		12
Midvale Elementary											SPR		SPR													SPR
Muir Elementary											SPR		SPR													SPR
Olson Elementary													SPR				SPR									8
Orchard Ridge Elementary													9									SPR		SPR		14
Sandburg Elementary					SPR						SPR	SPR		SPR									SPR		SPR	17
Schenk Elementary					SPR						SPR	SPR		SPR									SPR			15
Shorewood Elementary													SPR													SPR
Stephens Elementary			SPR								SPR		13											SPR	SPR	22
Thoreau Elementary											SPR		SPR													SPR
Zone Allied El Asg											SPR													SPR		SPR
Total	SPR	SPR	SPR	SPR	21	SPR	SPR	SPR	SPR	SPR	140	14	61	96	SPR	7	11	47	SPR	SPR	26	73	41	SPR	556	



Middle Leavers by School and External District

Non-MMSD District		Appleton	De Forest	McFarland	Merrill	Middleton	Monona	Mt. Horeb	No. Ozaukee	Oregon	Sun Prairie	Verona	Waukesha	Waunakee	Total
Attendance area of residence	Black Hawk Middle		SPR	SPR					SPR					SPR	12
	Cherokee Middle					SPR	SPR			SPR		SPR			13
	Hamilton Middle			SPR											SPR
	Jefferson Middle	SPR		SPR		SPR		SPR				SPR			12
	O'Keeffe Middle			SPR											SPR
	Sennett Middle	SPR	SPR	35		SPR	13			SPR		SPR		SPR	55
	Sherman Middle		SPR	SPR			SPR		SPR	SPR	SPR		SPR	SPR	14
	Toki Middle			SPR	SPR	SPR							15		26
	Whitehorse Middle			SPR	SPR	SPR	SPR		SPR		SPR		SPR		16
	Zone Allied Ms Asg											SPR			SPR
	Zone Opt Cher/Ham					SPR									SPR
	Zone Opt Toki/Jef					SPR			SPR						SPR
Total		SPR	SPR	57	SPR	17	22	SPR	SPR	7	SPR	26	SPR	SPR	160

At the middle school level, the highest count of leavers is from Sennett (55), with 35 of those students attending McFarland schools.

High Leavers by School and External District

Non-MMSD District		De Forest	Granstburg	Lodi	McFarland	Middleton	Monona	Monroe	Mt Horeb	No Ozaukee	Oregon	Portage	Sauk Prairie	Stoughton	Sun Prairie	Verona	Waukesha	Waunakee	Wisconsin Heights	Total
Attendance area of residence	East High	SPR	SPR		9	SPR	29			SPR	SPR				8				12	65
	La Follette High		SPR		44	SPR	83			SPR	SPR			SPR	SPR	SPR	SPR			147
	Memorial High		SPR	SPR	SPR	60	SPR	SPR	SPR	SPR		SPR	SPR		SPR	82	SPR	SPR		164
	West High		SPR		SPR	SPR	SPR	SPR	SPR	SPR	SPR					26	SPR		SPR	46
	Zone Opt High School				SPR		SPR									SPR				SPR
Total		SPR	SPR	SPR	62	70	117	SPR	SPR	7	SPR	SPR	SPR	SPR	15	110	SPR	15	SPR	425

Memorial (164) and La Follette (147) have the most leavers at the high school level. Most leavers from Memorial go to Verona and Middleton, while most leavers from La Follette go to Monona and McFarland.



Appendix: Open Enrollment Data Request

MMSD received a media request for historical data on open enrollment leavers and enterers by school attendance area and race. The data provided to fulfill the request appears below.

Open Enrollment Leavers by District

To School	1999	2000	2001	2002	2003	2004	2005	2006	2007	2008	2009	2010	2011	2012	2013	2014
Albany					SPR								SPR			
Appleton					8	11	SPR	SPR	9	SPR	14	9	SPR	SPR	8	SPR
Belleville		SPR				SPR						SPR				
Brodhead				SPR												
Cambridge		SPR			SPR									SPR	SPR	SPR
Cameron																SPR
Clinton						SPR										
Columbus															SPR	SPR
De Forest	SPR				SPR	SPR	SPR			SPR	SPR	7	13	20	27	28
Deerfield	SPR				SPR			SPR				SPR	SPR	SPR	SPR	SPR
Dodgeville				SPR											SPR	SPR
Edgerton				SPR												
Evansville								SPR								
Geneva J4 Sch Dist																SPR
Genoa City J2 Sch Dist																SPR
Grantsburg										SPR	SPR	11	SPR	8	SPR	SPR
Hayward														9	SPR	SPR
Janesville												SPR				
Ladysmith					SPR											
Lake Geneva						SPR										
Lake Mills					13										SPR	
Lodi								SPR				SPR	SPR	SPR	SPR	SPR
Marshall			SPR			SPR		SPR	SPR			SPR	SPR	SPR		
McFarland	SPR	SPR	SPR	SPR	SPR	SPR	7	19	24	40	80	117	158	176	205	259
Merrill															SPR	16
Middleton	11	SPR	SPR	8	22	15	SPR	26	23	44	47	48	110	114	124	148
Milwaukee						SPR										
Monona	SPR	SPR	17	40	40	29	13	38	43	49	91	116	132	192	231	235
Monroe						SPR	SPR	SPR	10	10	15	17	11	SPR	8	SPR
Mt Horeb					SPR	SPR					SPR	SPR	SPR	SPR	9	10
N Ozaukee						23	10	18	11	19	23	31	36	28	23	24
New Glarus				SPR				SPR								
Oregon		SPR		SPR		SPR	SPR		SPR	SPR	SPR	14	23	29	45	59
Portage																SPR
Randolph						SPR										
Sauk Prairie				SPR				SPR	SPR	SPR	SPR	SPR	SPR	SPR	SPR	SPR
Shawno				SPR												
Stoughton		SPR			SPR	SPR		SPR	8	11	SPR	8	9	SPR	9	7
Sun Prairie	SPR	SPR	SPR	SPR	SPR	SPR	SPR	16	12	11	11	21	25	34	44	47
Verona	25	9	14	52	59	17	7	49	67	86	125	154	200	230	228	209
Waukesha							7	15	20	SPR	11	18	12	10	11	8
Waunakee	SPR	SPR	SPR	SPR	SPR	SPR		7	11	11	21	29	23	34	51	61
Waupaca							SPR	SPR								
Wisconsin Heights														SPR	SPR	SPR
Grand Total	49	25	41	125	166	121	57	212	243	300	457	612	772	913	1041	1141



Open Enrollment Enterers by District

From School	1999	2000	2001	2002	2003	2004	2005	2006	2007	2008	2009	2010	2011	2012	2013	2014
Baraboo							SPR		SPR	SPR				SPR	SPR	SPR
Beaver Dam							SPR	SPR								
Belleville					SPR				SPR						SPR	SPR
Beloit												SPR	SPR	SPR		
Brodhead											SPR	SPR	SPR	SPR		
Cambria-Friesland						SPR						SPR	SPR	SPR	SPR	SPR
Cambridge					SPR			SPR				SPR	SPR	SPR	SPR	SPR
Columbus	SPR						SPR						SPR	SPR	SPR	SPR
Deerfield	SPR	SPR		SPR			SPR	SPR			SPR	SPR			SPR	SPR
DeForest	SPR	SPR	SPR	SPR	SPR	SPR	SPR	SPR	9	10	10	13	12	16	15	19
Dodgeville								SPR								
Edgerton									SPR	SPR		SPR	SPR	SPR	SPR	SPR
Evansville														SPR	SPR	SPR
Fall River				SPR				SPR		SPR	SPR	SPR	SPR	SPR		
Janesville					SPR		SPR								SPR	
Jefferson									SPR							
Lake Mills			SPR			SPR			SPR	SPR	SPR	SPR	SPR	SPR	SPR	
Lodi				SPR	SPR		SPR		SPR	SPR	SPR	SPR	SPR	SPR	SPR	SPR
Markesan						SPR										
Marshall		SPR		SPR					SPR	SPR	SPR					
McFarland	SPR	SPR		SPR	7		SPR	SPR	SPR	SPR	SPR		SPR	SPR	SPR	SPR
Middleton	8	7	SPR	10	15	19	19	36	37	37	38	39	34	48	67	76
Milton						SPR										
Milwaukee								SPR								
Monona	8	SPR	SPR	SPR	13	9	13	SPR	14	13	15	12	18	20	23	32
Monroe															SPR	SPR
Mt Horeb	SPR			SPR	SPR	SPR	SPR	SPR	SPR	SPR	SPR	SPR	SPR	SPR	SPR	SPR
New Glarus						SPR		SPR	SPR	SPR	SPR	SPR			SPR	SPR
Oregon	SPR	SPR	SPR	SPR	SPR	SPR		SPR	SPR	SPR	SPR	SPR	SPR	10	15	16
Parkview							SPR									
Pecatonica						SPR			SPR							SPR
Portage											SPR	SPR	SPR	SPR	SPR	SPR
Poynette				SPR	SPR	SPR		SPR				SPR				
Rio										SPR	SPR	SPR			SPR	
River Valley					SPR			SPR	SPR			SPR	SPR	SPR	SPR	SPR
Sauk Prairie												SPR	SPR	SPR	SPR	SPR
Stoughton	SPR	SPR	SPR	SPR	SPR	SPR	SPR	SPR	SPR	SPR	SPR	SPR	SPR	SPR	SPR	SPR
Sun Prairie	SPR	SPR	SPR	SPR	SPR	8	11	11	14	12	15	25	17	21	25	17
Verona	9	SPR		20	12	25	17	22	52	54	55	52	56	66	85	84
Waterloo																SPR
Waukesha					SPR											
Waunakee				SPR	SPR	SPR				SPR	SPR	7	9	8	8	13
Westfield				SPR												
Wisconsin Heights	SPR			SPR	SPR							SPR	SPR	SPR	SPR	SPR
Grand Total	43	24	16	65	78	81	79	104	153	154	166	178	175	219	281	299



Open Enrollment Leavers by Race

Race	1999	2000	2001	2002	2003	2004	2005	2006	2007	2008	2009	2010	2011	2012	2013	2014
African American	12	SPR	7	11	16	10	9	26	32	56	86	90	83	91	85	97
Asian	SPR	SPR	SPR	SPR	SPR	SPR	SPR	19	25	28	34	48	49	50	56	66
Hispanic				SPR	SPR	7	9	17	32	49	54	52	65	85	85	109
Native American						SPR	SPR	SPR	SPR	SPR	7	7	8	9	12	10
Pacific Islander					SPR										SPR	SPR
Two or More Races	SPR		SPR	SPR	SPR	SPR		SPR	SPR	SPR	9	12	24	36	53	75
White	35	20	32	102	138	99	37	140	144	150	266	397	460	563	667	764
Unknown								SPR		8	SPR	SPR	83	79	82	19
Grand Total	49	25	41	125	166	121	57	212	243	300	457	612	772	913	1041	1141

Open Enrollment Enterers by Race

Race	1999	2000	2001	2002	2003	2004	2005	2006	2007	2008	2009	2010	2011	2012	2013	2014
African American	17		SPR	14	17	25	21	20	38	46	56	60	35	50	56	55
Asian		SPR	SPR	7	SPR	SPR	9	13	24	16	17	15	14	13	21	19
Hispanic	SPR	SPR	SPR	7	SPR	15	8	17	27	34	35	40	48	42	50	56
Native American				SPR	SPR	SPR		SPR	SPR	SPR	SPR	SPR	SPR			
Two or More Races				SPR	SPR	SPR	SPR	SPR					16	26	25	24
White	23	22	11	34	51	34	38	50	62	55	55	61	61	88	129	145
Grand Total	43	24	16	65	78	81	79	104	153	154	166	178	175	219	281	299



School Capacities Fall 2013

Key Findings

1. Capacity calculations presented in this report are based only on available seats for students, so they provide an incomplete picture of the number of students a school can reasonably support and should be used in concert with qualitative data to address space capacity concerns.
2. Most MMSD schools are not over capacity. Only four of 32 elementary schools and two of 12 middle schools had Third Friday enrollment numbers above their calculated capacity, and none by more than 21 students, an average of one student extra per classroom. In addition, the capacity formula is conservative by design, so schools that are slightly over capacity likely still have available seats in classrooms.

Capacity Methodology

Research indicates that the ideal operating capacity for schools is 90% to allow for flexibility during the school year. Capacity calculations in MMSD vary by level. At the elementary school level, capacity calculations are based on the number of available classrooms and the number of students that can sit in a classroom. The number of available classrooms is calculated by first counting the number of rooms in each building that could become a classroom (well-ventilated rooms that are 500 square feet or larger). Then, rooms that are used for certain other activities (art, music, Reach, strings, alternative programs, 4K, etc.) are subtracted from this count. These room counts were collected based on floorplans labeled by each principal in Fall 2012 and revised through ongoing communication over the past year. Finally, one more room is subtracted from the total to allow for overflow space unless we hear otherwise from a school. The resulting number indicates how many rooms could be used as homerooms in each building. This number is then multiplied by the number of students who can sit in a classroom to calculate a capacity. Because room use can change significantly from year to year, school capacities are not static and can also vary over time. At the middle school level, because homerooms are less static and because students move more frequently from room to room, school capacities are based on the number of instructional spaces and gyms without any adjustments based on room usage.

According to a review conducted by Hanover Research, MMSD's capacity calculations are aligned with practices in other similarly sized school districts. These capacity calculations do not address issues of inadequate facilities, scheduling, or space use. Instead, they provide context around the number of students each building could support based only on available seats. As such, they are an incomplete picture of capacity and should be used in concert with qualitative data to assess capacity concerns.

Schools Over 100% of Capacity

For 2013-14, six schools were over 100% capacity as of the third Friday in September. Traditionally, the school capacity formula is designed to be conservative because of the one room allowance for overflow space, so schools listed as slightly over capacity likely still have seats available for additional students.

Hawthorne Elementary had an unanticipated enrollment increase from 2012-13 to 2013-14 due largely to a 41% increase in the size of the Kindergarten class. Midvale Elementary had an unanticipated enrollment increase of 50 students from 2012-13 to 2013-14, driven largely by a Kindergarten class that was 24% larger than the year before. Even so, Midvale is only three students above capacity.

Nuestro Mundo Elementary has seats available at almost every grade level despite being slightly over 100% capacity. In addition, their current enrollment does not exceed what is allowed by the school's charter. Randall Elementary is nine students over capacity but was 18 students over capacity last year, so enrollment management is moving Randall closer to being under capacity.

Jefferson and Hamilton Middle are listed at 10 and 20 students over capacity, respectively. At the middle school level, this amounts to fewer than one student in each classroom.



Elementary School Capacities

School Name	2013-14 Total K-12 Student Capacity	2013-14 Third Friday Enrollment	2013-14 Remaining Seats	2013-14 Percent of Capacity	Projected 2018-19 Enrollment	Projected 2018-19 Percent of Capacity
Hawthorne	354	375	-21	106%	442	125%
Nuestro Mundo	295	303	-8	103%	302	102%
Randall	370	379	-9	102%	304	82%
Midvale	442	445	-3	101%	503	114%
Shorewood	469	465	4	99%	481	103%
Van Hise	402	398	4	99%	364	90%
Sandburg	393	381	12	97%	420	107%
Chavez	670	638	32	95%	766	114%
Kennedy	603	573	30	95%	537	89%
Gompers	275	258	17	94%	263	95%
Elvehjem	469	438	31	93%	380	81%
Franklin	393	356	37	91%	334	85%
Lake View	315	281	34	89%	313	100%
Leopold	767	680	87	89%	873	114%
Orchard Ridge	354	313	41	88%	336	95%
Emerson	413	358	55	87%	392	95%
Huegel	531	460	71	87%	425	80%
Lindbergh	275	238	37	86%	190	69%
Schenk	492	422	70	86%	403	82%
Stephens	558	476	82	85%	520	93%
Crestwood	472	395	77	84%	386	82%
Glendale	511	424	87	83%	436	85%
Thoreau	472	389	83	82%	403	85%
Lapham	289	238	51	82%	258	89%
Marquette	296	241	55	81%	235	79%
Muir	514	405	109	79%	375	73%
Falk	354	270	84	76%	241	68%
Olson	603	447	156	74%	414	69%
Lincoln	535	389	146	73%	459	86%
Mendota	393	279	114	71%	246	63%
Lowell	452	314	138	69%	291	64%
Allis	590	388	202	66%	414	70%

For the 2013-14 school year, four elementary schools were above 100% capacity as of the third Friday in September, although none were over capacity by more than an average of one student per classroom. Several other schools are close to 100% of capacity. Based on five-year enrollment projections, we expect seven schools to be above 100% capacity by 2018-19, although these projections are highly variable and subject to significant change.



Middle and High School Capacities

Attendance Area		2013-14 Student Capacity	2013-14 3rd Friday September Enrollment	2013-14 Number of Seats Remaining	2013-14 Percent of Capacity	Projected 2018-19 Enrollment	Projected 2018-19 Percent of Capacity
Black Hawk Mid	East	576	395	181	69%	445	77%
O'Keeffe Mid	East	774	444	330	57%	430	56%
Sherman Mid	East	684	421	263	62%	507	74%
<i>East Total Middle</i>		<i>2034</i>	<i>1260</i>	<i>774</i>	<i>62%</i>	<i>1382</i>	<i>68%</i>
East High	East	2737	1608	1129	59%	1835	67%
Badger Rock	La Follette	126	92	34	73%	119	94%
Sennett Mid	La Follette	918	606	312	66%	697	76%
Whitehorse Mid	La Follette	522	469	53	90%	319	61%
<i>La Follette Total Middle</i>		<i>1566</i>	<i>1167</i>	<i>399</i>	<i>75%</i>	<i>1135</i>	<i>72%</i>
La Follette High	La Follette	2346	1476	870	63%	1742	74%
Jefferson Mid	Memorial	540	550	-10	102%	524	97%
Spring Harbor Mid	Memorial	306	268	38	88%	267	87%
Toki Mid	Memorial	774	523	251	68%	675	87%
<i>Memorial Total Middle</i>		<i>1620</i>	<i>1341</i>	<i>279</i>	<i>83%</i>	<i>1466</i>	<i>90%</i>
Memorial High	Memorial	2323	1832	491	79%	2037	88%
Cherokee Mid	West	630	509	121	81%	459	73%
Hamilton Mid	West	774	794	-20	103%	827	107%
James Wright Mid	West	324	255	69	79%	298	92%
<i>West Total Middle</i>		<i>1728</i>	<i>1558</i>	<i>170</i>	<i>90%</i>	<i>1584</i>	<i>92%</i>
West High	West	2300	2032	268	88%	2252	98%
Shabazz		252	103	149	41%	103	41%
Total District Middle		6822	5326	1496	78%	5567	82%
Total District High		9958	7051	2907	71%	7969	80%

Next Steps & Strategies

Capacity calculations are part of a larger effort to build a long-term facilities plan for MMSD.

We will review the formula for calculating capacities and methods for attributing room usage to ensure that capacity calculations are as accurate and useful as possible. We will revisit the tradition of allowing one overflow room for each school in capacity calculations to assess whether this practice is appropriate and whether it enhances or diminishes the utility of the capacity calculation.

The capacity review process must include on-site auditing of room use conducted by Building Services and/or a consultant.