



Attendance 2013-14

Key Findings

1. In 2013-14, MMSD students had an overall attendance rate of 93.4%, with significant differences in attendance rates by student subgroup. These rates and trends have changed little over the past three years.
2. Attendance rates were relatively steady in elementary and middle school at around 94%, but decreased to high school to an average of around 91%.
3. Chronic absenteeism, as defined by MMSD, followed similar trends as attendance rates.

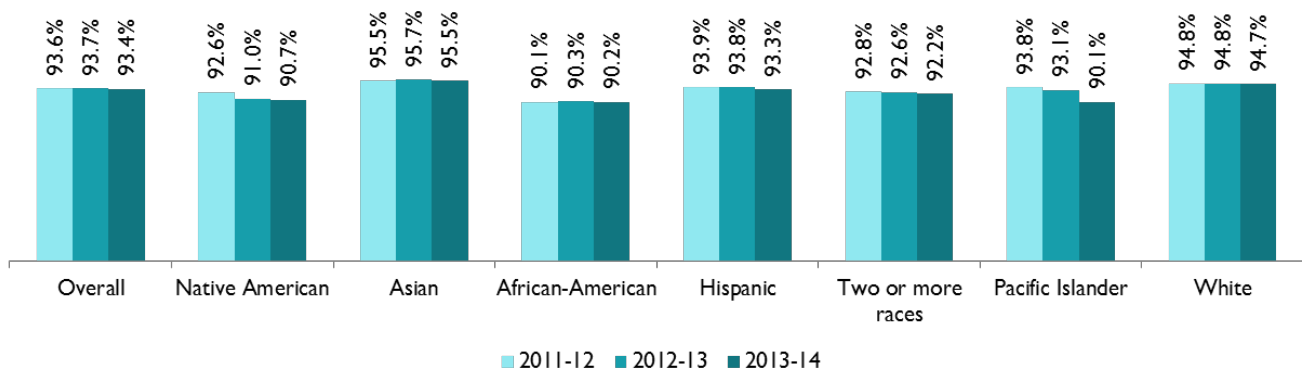
Background

This report includes attendance data from the 2013-14 school year. The district's attendance goal for all students is 94%, and district defines a student as chronically absent if their attendance rate is below 90%. Students with 94% attendance would miss about 11 days of school during the year, while students with 90% attendance would miss about 18 days.

In MMSD, attendance rates do not distinguish between unexcused and excused absences; therefore, a student who misses 10% of school days but has all excused absences will have an attendance rate of 90%, not 100%. This is the same approach used by DPI for school accountability calculations. Students attending field trips or other school-sponsored events, though, are marked present and do not contribute to lower attendance rates.

Attendance Rates

Attendance Rates by Race/Ethnicity

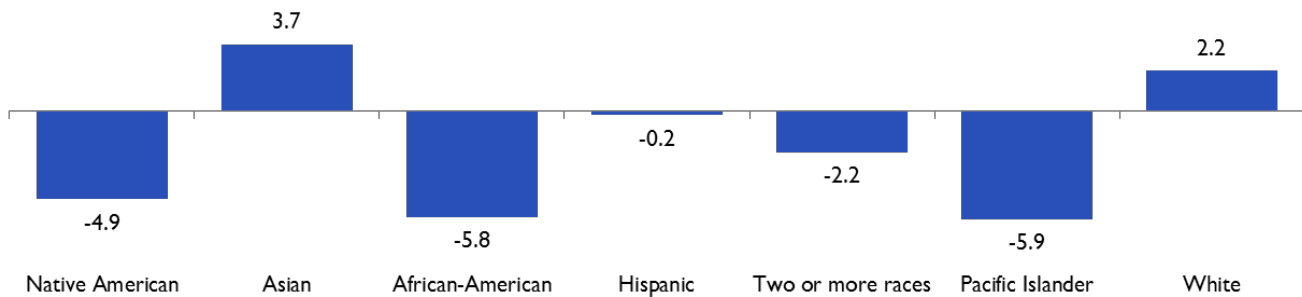


Attendance rates in MMSD vary across racial/ethnic groups. Asian students have the highest attendance rate (95.5% in 2013-14) while African-American and Pacific Islander students have the lowest attendance rates (90.2% and 90.1% in 2013-14, respectively).

Attendance rates across subgroups have changed little over the past three school years; the 0.3 percentage point decline in the overall rate from 2012-13 to 2013-14 corresponds to only about half a day throughout the school year on average.

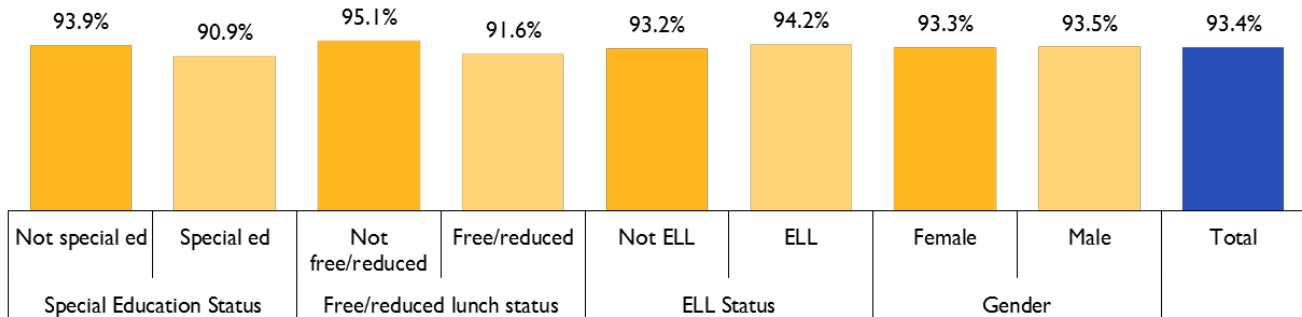


2013-14 Attendance Gaps in Days of Instruction by Race/Ethnicity



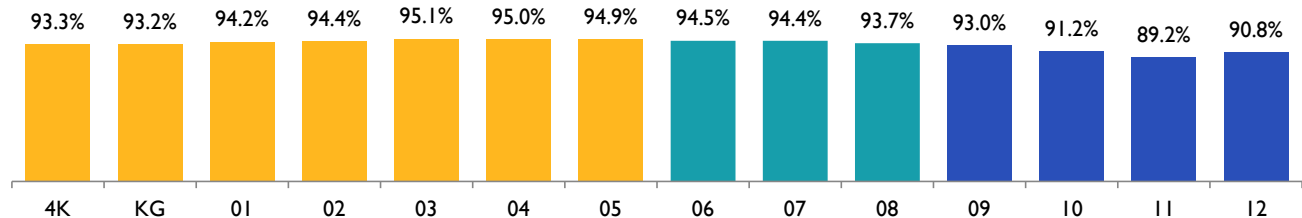
The graph above shows attendance gaps between racial/ethnic subgroups and the district average in terms of days of instruction. For example, the average African-American student attends school 5.8 fewer days than the average student in MMSD overall, while the average white student attends school 2.2 more days than average. Similarly, the attendance gap between white and African-American students corresponds to about eight days of instruction during the year.

2013-14 Overall Attendance Rates by Other Subgroups



Attendance rate gaps exist between other subgroups as well. For example, students receiving free/reduced lunch attend school at a rate 3.5% lower than those not receiving free/reduced lunch. Special education students attend school at a rate 3 percentage points lower than non-special education students. ELL students attend school at higher rates than their non-ELL peers, while there are no meaningful differences in attendance by gender.

2013-14 Attendance Rates by Grade



Bars in the graph above are color coded by level (elementary in orange, middle in teal, high in blue). Attendance rates increase until grade 3, where they peak at 95.1%. Between grade 3 and grade 11, they decline to 89.2%. The 5.9 percentage point gap between the highest and lowest grades (grade 3 and grade 11) corresponds to almost 11 days of school during the year.

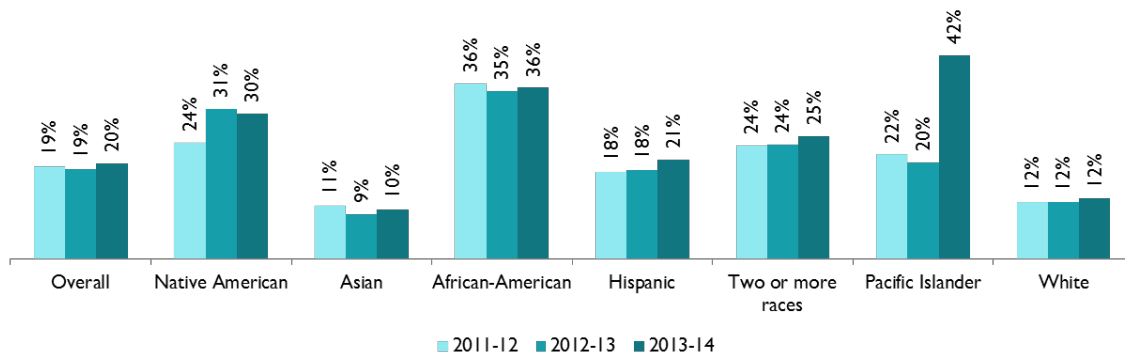


Chronic Absenteeism

The tables below use the MMSD definition of chronic absenteeism, defined as an attendance rate below 90%. Students with an attendance rate of 90% miss, on average, one half day of school every week, or 18 days during the year.

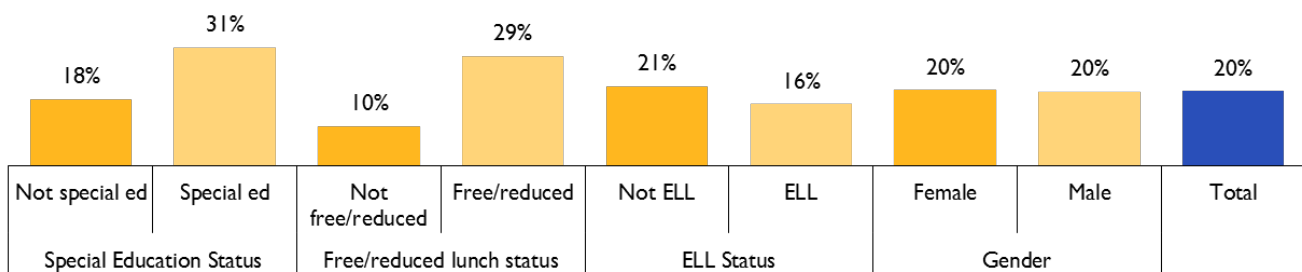
This absenteeism definition differs from the definition used by DPI for the School Accountability Report Cards, which use an attendance rate of 84% or below. We chose not to use the DPI definition for this report because DPI uses a slightly different methodology for calculating attendance rates from the methodology used for the Data Dashboard; as such, we chose to focus on data that our schools can see and use for this report, rather than data used internally by DPI.

Chronic Absenteeism by Race/Ethnicity



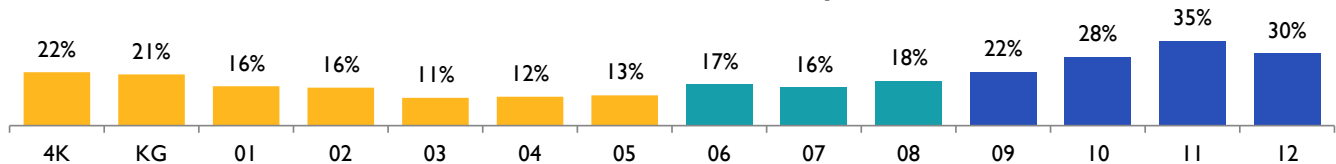
There are large racial/ethnic gaps in chronic absenteeism, which have remained relatively constant over the past three years. For example, only 10% of Asian students and 12% of white students are chronically absent, while 36% of African-American students are chronically absent. The large fluctuations for Native American and Pacific Islander students over the past three years likely are due to small student counts.

2013-14 Chronic Absenteeism by Other Subgroups



As with attendance, chronic absenteeism varies across other subgroups as well. Students receiving free/reduced lunch (29%) and special education students (31%) have particularly high absenteeism rates compared to the district total (20%)

2013-14 Chronic Absenteeism by Grade



Bars in the graph above are color coded by level (elementary in orange, middle in teal, high in blue). Chronic absenteeism by grade follows a similar pattern as attendance rates, with absenteeism starting high in 4K and kindergarten before declining across earlier grades, later increasing, and finally dropping again in grade 12.



Attendance Rates by School

School	Overall Rates		2013-14 Subgroup Rates							
	2012-13 Overall	2013-14 Overall	Asian	African-American	Hispanic	Two or more races	White	Free/Reduced Lunch	ELL	Special Education
Allis Elementary	94.1%	93.8%	96.2%	91.1%	94.5%	92.9%	95.6%	92.9%	95.1%	94.0%
Chavez Elementary	95.7%	95.5%	96.4%	92.1%	95.0%	94.8%	95.7%	94.0%	95.1%	94.4%
Crestwood Elementary	94.3%	94.2%	95.8%	91.4%	94.1%	93.6%	95.2%	92.6%	94.9%	92.3%
Elvehjem Elementary	95.8%	95.0%	95.4%	94.6%	93.7%	91.8%	95.2%	92.6%	95.3%	92.1%
Emerson Elementary	94.4%	93.0%	96.3%	90.9%	91.7%	89.6%	94.9%	91.3%	93.9%	88.3%
Falk Elementary	92.9%	91.8%	93.0%	88.6%	92.9%	93.4%	94.4%	90.7%	92.8%	91.8%
Franklin Elementary	95.3%	94.9%	94.3%	93.8%	94.2%	93.9%	95.0%	92.8%	93.5%	95.3%
Glendale Elementary	94.4%	93.7%	96.1%	91.7%	94.3%	91.8%	94.3%	92.9%	94.7%	91.4%
Gompers Elementary	95.5%	95.6%	96.2%	94.6%	94.9%	94.6%	95.8%	94.4%	95.7%	93.4%
Hawthorne Elementary	93.8%	92.2%	95.1%	89.1%	93.8%	91.8%	92.1%	90.9%	93.4%	91.2%
Huegel Elementary	95.1%	93.8%	96.8%	89.8%	94.4%	94.7%	94.7%	92.6%	94.3%	91.8%
Kennedy Elementary	94.5%	94.1%	95.9%	91.8%	91.5%	92.7%	95.4%	91.9%	93.5%	91.8%
Lake View Elementary	92.8%	92.8%	94.6%	91.4%	87.9%	92.5%	93.9%	91.3%	93.5%	90.6%
Lapham Elementary	93.4%	93.3%	95.8%	87.6%	92.5%	91.6%	93.9%	89.2%	92.4%	93.2%
Leopold Elementary	93.7%	93.7%	95.1%	90.9%	94.5%	92.3%	95.0%	92.6%	94.9%	93.6%
Lincoln Elementary	95.9%	95.6%	97.1%	93.9%	96.0%	94.4%	96.3%	95.3%	96.5%	95.2%
Lindbergh Elementary	94.6%	94.8%	96.1%	95.5%	94.1%	93.2%	94.8%	94.1%	95.3%	95.2%
Lowell Elementary	95.0%	95.2%	95.9%	94.0%	95.1%	95.4%	95.5%	94.3%	96.7%	95.0%
Marquette Elementary	95.5%	94.8%	97.3%	91.7%	94.4%	94.5%	95.1%	92.3%	93.9%	91.9%
Mendota Elementary	92.1%	92.6%	93.9%	91.9%	91.3%	92.7%	94.1%	91.4%	93.3%	90.1%
Midvale Elementary	95.0%	94.8%	94.8%	92.6%	94.2%	93.5%	95.6%	93.6%	94.4%	93.4%
Muir Elementary	95.7%	94.9%	93.6%	92.6%	95.1%	93.3%	96.0%	93.5%	94.3%	95.2%
Nuestro Mundo Elementary	95.7%	96.3%	94.4%	98.3%	95.6%	96.1%	96.1%	95.3%	95.5%	96.3%
Olson Elementary	95.4%	95.3%	95.9%	92.0%	94.9%	96.4%	96.3%	93.3%	95.1%	92.3%
Orchard Ridge Elementary	93.6%	92.2%	96.0%	90.2%	91.9%	89.4%	95.2%	90.4%	93.8%	91.7%
Randall Elementary	95.5%	95.8%	97.1%	94.1%	93.9%	94.2%	96.0%	94.8%	95.7%	94.4%
Sandburg Elementary	95.6%	95.2%	96.4%	93.6%	95.8%	93.1%	95.0%	94.8%	95.9%	93.0%
Schenk Elementary	94.1%	93.7%	96.9%	92.9%	93.9%	94.0%	94.0%	93.2%	94.6%	90.7%
Shorewood Elementary	96.0%	95.3%	96.1%	94.4%	93.8%	95.5%	95.0%	94.4%	95.6%	93.2%
Stephens Elementary	95.2%	94.2%	94.2%	91.8%	92.3%	93.4%	95.8%	92.2%	93.1%	92.5%
Thoreau Elementary	94.4%	94.3%	91.2%	91.6%	93.9%	93.1%	95.7%	93.2%	93.9%	92.4%
Van Hise Elementary	95.7%	95.4%	96.6%	95.2%	94.6%	96.1%	94.9%	94.2%	95.8%	92.4%
Badger Rock Middle	96.3%	95.0%	96.2%	93.8%	96.8%	93.8%	95.7%	95.0%	97.3%	95.3%
Black Hawk Middle	94.0%	93.4%	96.1%	93.3%	94.4%	93.9%	93.8%	93.1%	96.0%	91.5%
Cherokee Middle	92.7%	92.2%	96.3%	89.2%	92.5%	90.6%	95.2%	91.1%	93.9%	88.6%
Hamilton Middle	95.1%	95.1%	96.8%	92.2%	94.6%	96.1%	95.4%	93.8%	95.9%	94.7%
Jefferson Middle	94.4%	94.5%	97.1%	90.9%	94.1%	95.5%	95.8%	92.6%	95.5%	91.4%
O'Keeffe Middle	95.2%	94.9%	97.0%	94.1%	95.0%	95.4%	95.1%	94.2%	95.5%	94.7%
Sennett Middle	94.2%	94.2%	96.9%	93.6%	95.1%	93.1%	95.4%	94.3%	95.8%	92.9%
Sherman Middle	93.8%	94.1%	96.7%	93.4%	95.0%	92.5%	94.7%	93.9%	96.0%	91.9%
Spring Harbor Middle	95.9%	94.9%	96.8%	91.7%	95.4%	93.8%	95.9%	93.3%	96.0%	92.6%
Toki Middle	94.2%	94.0%	98.2%	91.0%	94.8%	91.1%	95.8%	92.5%	95.6%	91.0%
Whitehorse Middle	94.7%	94.6%	97.4%	92.5%	94.7%	91.7%	95.3%	92.9%	95.6%	92.6%
Wright Middle	94.5%	94.1%	98.2%	92.6%	95.6%	91.7%	93.5%	94.6%	96.0%	91.3%
East High	88.8%	88.7%	92.3%	87.1%	89.5%	86.6%	92.2%	87.8%	91.4%	87.1%
Innovative & Alt High	87.5%	85.2%	84.6%	77.8%	79.6%	82.0%	79.2%	79.1%	80.0%	81.8%
La Follette High	91.0%	90.8%	93.1%	88.8%	92.5%	90.4%	93.4%	89.7%	92.8%	88.7%
Memorial High	92.0%	92.8%	96.6%	88.0%	91.1%	91.4%	95.0%	89.0%	93.4%	88.9%
Shabazz High	91.7%	92.3%	83.1%	89.1%	91.7%	90.9%	90.8%	87.7%	88.6%	91.4%
West High	92.0%	92.0%	95.1%	87.1%	91.6%	92.3%	93.8%	89.6%	92.9%	89.8%
District Total	93.7%	93.4%	95.5%	90.2%	93.3%	92.2%	94.7%	91.6%	94.2%	90.9%

Innovative & Alternative Middle, Native American students, and Pacific Islander students do not appear because of small student counts. Overall rates for 2013-14 are color coded by level; as such, green and red do not necessarily represent strong and weak performance, but rather performance relative to the school's level.

Significant differences in attendance exist between schools. For example, elementary attendance rates range between 91.8% and 96.3%, a difference that corresponds to more than eight days of instruction during the school year.



Chronic Absenteeism by School

School	Overall Rates		2013-14 Subgroup Rates							
	2012-13 Overall	2013-14 Overall	2013-14 Asian	2013-14 African-American	2013-14 Hispanic	2013-14 Two or more races	2013-14 White	Free/Reduced Lunch	ELL	2013-14 Special Education
Allis Elementary	27%	23%	0%	40%	14%	28%	11%	28%	9%	24%
Chavez Elementary	8%	9%	5%	24%	16%	10%	6%	17%	14%	16%
Crestwood Elementary	17%	15%	7%	31%	16%	8%	10%	23%	12%	29%
Elvehjem Elementary	10%	10%	13%	12%	12%	12%	8%	17%	9%	19%
Emerson Elementary	15%	24%	6%	37%	30%	41%	12%	33%	19%	49%
Falk Elementary	25%	31%	26%	43%	29%	20%	14%	36%	25%	34%
Franklin Elementary	13%	14%	24%	28%	12%	13%	12%	23%	21%	13%
Glendale Elementary	18%	20%	9%	29%	15%	32%	15%	24%	13%	33%
Gompers Elementary	12%	10%	5%	15%	13%	8%	8%	17%	7%	24%
Hawthorne Elementary	21%	29%	11%	49%	14%	29%	28%	35%	16%	36%
Huegel Elementary	12%	16%	9%	35%	20%	10%	8%	25%	19%	23%
Kennedy Elementary	14%	15%	0%	38%	25%	30%	7%	29%	17%	27%
Lake View Elementary	29%	32%	20%	38%	49%	32%	20%	36%	23%	37%
Lapham Elementary	27%	26%	0%	57%	29%	28%	19%	47%	28%	23%
Leopold Elementary	18%	21%	16%	34%	15%	33%	10%	25%	13%	20%
Lincoln Elementary	10%	8%	0%	17%	9%	19%	1%	12%	5%	12%
Lindbergh Elementary	17%	15%	11%	17%	15%	18%	16%	19%	12%	12%
Lowell Elementary	17%	11%	10%	21%	11%	10%	8%	18%	4%	12%
Marquette Elementary	18%	15%	14%	37%	15%	22%	8%	29%	22%	31%
Mendota Elementary	32%	31%	17%	33%	36%	32%	23%	36%	22%	41%
Midvale Elementary	13%	16%	12%	30%	19%	28%	6%	22%	15%	22%
Muir Elementary	10%	14%	16%	26%	12%	17%	5%	20%	13%	15%
Nuestro Mundo Elementary	6%	7%	33%	9%	8%	0%	5%	10%	8%	8%
Olson Elementary	8%	9%	4%	26%	11%	0%	4%	19%	5%	23%
Orchard Ridge Elementary	23%	25%	15%	39%	33%	28%	9%	37%	26%	36%
Randall Elementary	9%	6%	0%	13%	17%	12%	4%	10%	7%	11%
Sandburg Elementary	9%	12%	4%	18%	7%	18%	14%	13%	6%	23%
Schenk Elementary	19%	18%	6%	26%	14%	19%	14%	20%	12%	27%
Shorewood Elementary	8%	10%	7%	24%	13%	7%	8%	11%	9%	17%
Stephens Elementary	10%	17%	17%	33%	26%	21%	6%	28%	22%	22%
Thoreau Elementary	13%	17%	29%	36%	23%	14%	7%	25%	21%	29%
Van Hise Elementary	8%	8%	6%	4%	11%	5%	9%	10%	8%	15%
Badger Rock Middle	7%	11%	0%	21%	3%	14%	7%	12%	0%	9%
Black Hawk Middle	17%	17%	7%	22%	17%	18%	17%	21%	7%	31%
Cherokee Middle	19%	27%	6%	46%	31%	33%	10%	37%	22%	46%
Hamilton Middle	7%	9%	4%	27%	13%	6%	8%	19%	8%	17%
Jefferson Middle	14%	15%	5%	30%	23%	9%	7%	26%	13%	31%
O'Keeffe Middle	12%	13%	5%	24%	12%	13%	10%	20%	9%	17%
Sennett Middle	12%	13%	5%	23%	12%	21%	7%	16%	8%	23%
Sherman Middle	16%	20%	7%	30%	13%	29%	18%	23%	9%	38%
Spring Harbor Middle	5%	12%	4%	25%	13%	27%	7%	23%	12%	25%
Toki Middle	16%	15%	0%	33%	14%	39%	6%	27%	10%	33%
Whitehorse Middle	14%	15%	0%	25%	16%	25%	10%	23%	11%	28%
Wright Middle	10%	12%	4%	19%	10%	10%	8%	13%	9%	25%
East High	29%	32%	20%	41%	34%	45%	25%	41%	27%	39%
Innovative & Alt High	68%	61%	42%	60%	64%	61%	61%	62%	61%	55%
La Follette High	21%	24%	17%	37%	21%	33%	18%	33%	19%	39%
Memorial High	20%	20%	6%	42%	30%	24%	11%	39%	21%	40%
Shabazz High	37%	33%	29%	47%	38%	33%	29%	42%	38%	24%
West High	22%	25%	13%	47%	30%	29%	18%	40%	24%	38%
District Total	19%	20%	10%	36%	21%	25%	12%	29%	16%	31%

Innovative & Alternative Middle, Native American students, and Pacific Islander students do not appear because of small student counts. Overall rates for 2013-14 are color coded by level; as such, green and red do not necessarily represent strong and weak performance, but rather performance relative to the school's level.

As with attendance, significant absenteeism differences exist between schools. For example, elementary chronic absenteeism ranges between 6% and 31% and middle school chronic absenteeism ranges between 9% and 27%.